

Bebop Composition

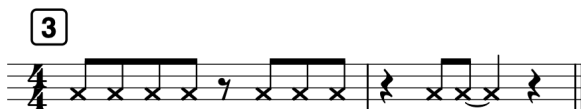
Name: _____

Write a composition for solo instrument and rhythm section in a bebop style. Comparable tunes are “Salt Peanuts” (Gillespie/Clark) and “Passport” (Parker).

1. **Form:** Your piece will be in 32-bar AABA form: an A section of 8 bars (repeated), an 8-bar B section, followed by an 8-bar A section (implied, but not written out).
2. **Lead sheet:** write the melody on a single, unaccompanied treble staff, and write chord symbols above it.
3. **Motive and rhythm**
 - **Option a:** Choose one of the four rhythmic motives (see Page 2) to develop in your melody. Almost all of your melody should be variations on this rhythm, though you may compose a new rhythm at the cadence.
 - **Option b:** If you choose not to use one of these motives, take care that your tune is still motive-driven and uses characteristic swing rhythms.
4. **Harmony**
 - a. The initial A sections follow the template given in the Composing with ii–V–I worksheet.
 - b. For the B section, use a cycle of secondary dominants: $V^7/vi - V^7/ii - V^7/V - V^7$. (This is called a “Sears Roebuck bridge.”) That’s four harmonies, so each chord will last two measures.
 - c. After you’ve composed your basic harmonies, incorporate alternative harmonizations, and indicate them in parenthesis above your original chord symbols. Please incorporate:
 - a. one CTo7 in the A section, embellishing a tonic chord
 - b. one mixture chord in the A section, replacing a ii chord
 - c. two tritone substitutions in the B section, replacing every other chord in the B section
5. **Voicing example:** To demonstrate fluency in chord symbols and voicings, provide a basic realization of your chord symbols, including ninths and thirteenths.
 - a. Copy your original (unembellished) chord symbols on your voicing example.
 - b. Notate the harmonies on the staff. Write for piano, using simple whole/half notes.
 - c. Incorporate extensions in almost all of your chords (9ths/13ths).
 - d. Follow the three upper voices paradigm given in the Jazz Voicings chapter.

Rhythmic motives

Choose one of the four two-bar rhythmic motives below to use as the basis for your composition. If you choose not to use one of these motives, you must still ensure that your piece is rhythmically unified!



Submission

Your complete submission will include two files:

- A .pdf of your lead sheet
- A .pdf of your voicing example

Grading

You will be evaluated on:

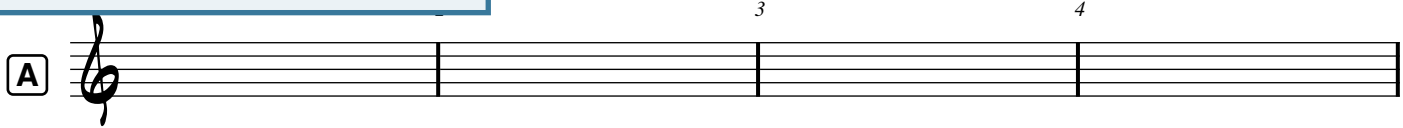
- Motive and rhythm
- Harmonic progressions
- Chord embellishments and substitutions
- Voicing
- Chord symbols

Bebop Composition - Part 1

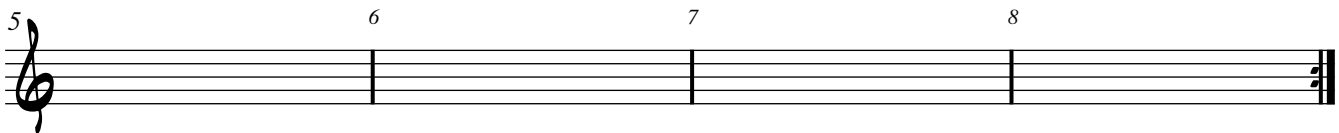
Lead Sheet

Name: _____

Add a key signature
and a 4/4 time signature.
Write the key signature on each system.



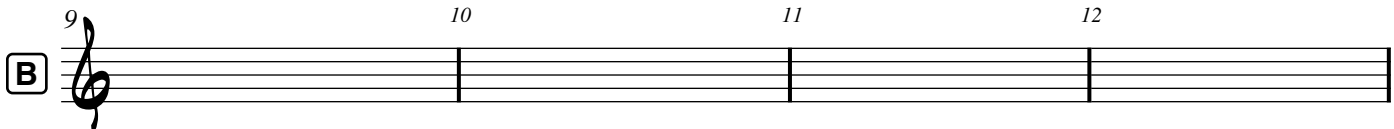
Write a four-measure-long progression to establish tonic, using one chord per bar.



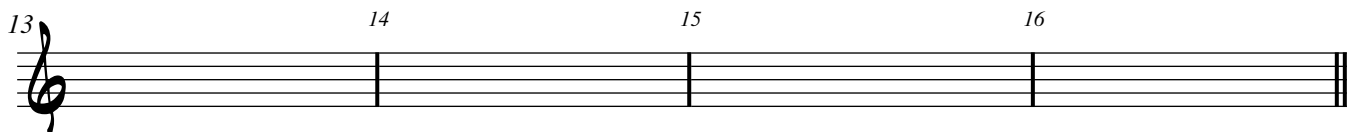
use the chord from m. 4
to smoothly transition
into a ii-V in a new key

write another ii-V
in yet another new key

ii-V in tonic, followed by a whole bar of tonic.



begin cycle of secondary dominants (see instructions for more info)



...ending on V7

Next, write a melody that meshes well with the harmonies, and that uses a rhythmic motive from Page 2.

After choosing your basic chords, indicate some alternative harmonizations by writing them in parentheses above the original chord symbols, including the following:

- one CT^{o7} in the A section, embellishing a tonic chord
- one mixture chord in the A section, replacing a ii chord
- two tritone substitutions in the B section, replacing every other chord in the B section

Bebop Composition - Part 2

Voicing Example

- Add a key signature on both staves, and a time signature of 4/4 on the first staff only.
- Copy your original (unembellished) chord symbols on your voicing example.
- Notate the harmonies on the staff. Write for piano, using simple whole/half notes.
- Incorporate extensions in almost all of your chords (9ths/13ths).
- Follow the three upper voices paradigm given in the Jazz Voicings chapter.

A

2 3 4 5 6 7 8

B

9 10 11 12 13 14 15 16