

Name: _____

Assignment # 4: Accidentals

1. **“Identifying Notes with Accidentals” Directions:** Write the letter name and accidental (e.g. C#) of the following notes in the blanks.

A. Treble Clef

A musical staff in treble clef with a key signature of one sharp (F#). The staff contains ten whole notes. The notes and their accidentals are: 1. F# (first line), 2. Bb (second space), 3. D (third space), 4. Bb (second space), 5. C# (third space), 6. C# (third space), 7. D (third space), 8. C# (third space), 9. Bb (second space), 10. C# (third space).

1. _____ 2. _____ 3. _____ 4. _____ 5. _____ 6. _____ 7. _____ 8. _____ 9. _____ 10. _____

B. Bass Clef

A musical staff in bass clef with a key signature of one sharp (F#). The staff contains ten whole notes. The notes and their accidentals are: 1. F# (first space), 2. C# (second space), 3. Bb (second space), 4. Bb (second space), 5. C# (second space), 6. C# (second space), 7. Bb (second space), 8. Bb (second space), 9. Bb (second space), 10. C# (second space).

1. _____ 2. _____ 3. _____ 4. _____ 5. _____ 6. _____ 7. _____ 8. _____ 9. _____ 10. _____

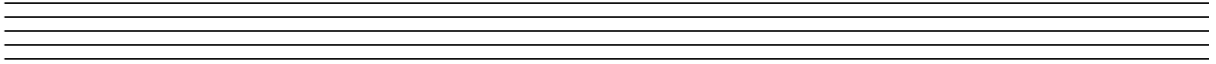
C. Ledger Lines

A musical staff in treble clef with a key signature of one sharp (F#). The staff contains ten whole notes. The notes and their accidentals are: 1. F# (first space), 2. C# (second space), 3. Bb (second space), 4. Bb (second space), 5. Bb (second space), 6. Bb (second space), 7. Bb (second space), 8. C# (second space), 9. C# (second space), 10. C# (second space).

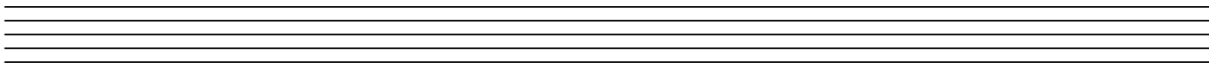
1. _____ 2. _____ 3. _____ 4. _____ 5. _____ 6. _____ 7. _____ 8. _____ 9. _____ 10. _____

2. **“Writing Accidentals” Directions:** Write the indicated accidentals, on different lines and spaces.

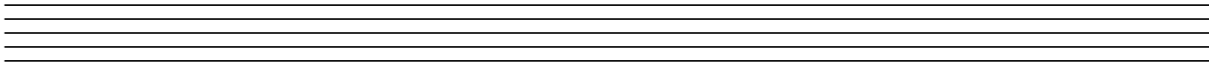
1. Write five sharps.



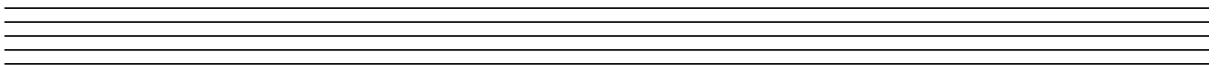
2. Write five flats.



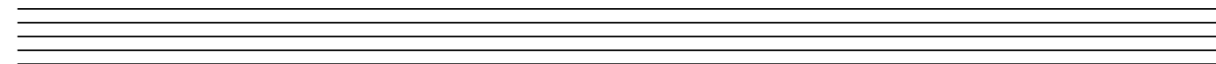
3. Write five naturals.



4. Write five double sharps.

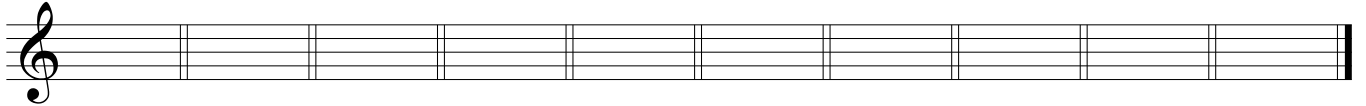


5. Write five double flats.



3. **“Writing Notes with Accidentals”** Directions: Write the notes and their accidentals in the indicated clefs, in any octave.

A. Treble Clef



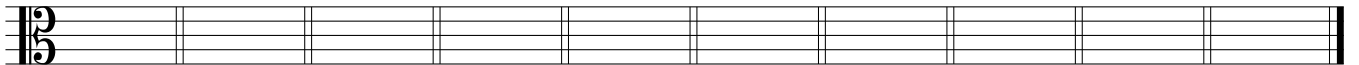
1. B \flat 2. G \sharp 3. A \natural 4. D \sharp 5. C \times 6. F $\flat\flat$ 7. A \flat 8. E \sharp 9. B \times 10. G \natural

B. Bass Clef



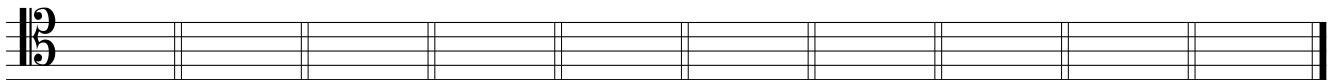
1. B \flat 2. G \sharp 3. A \natural 4. D \sharp 5. C \times 6. F $\flat\flat$ 7. A \flat 8. E \sharp 9. B \times 10. G \natural

C. Alto Clef



1. B \flat 2. G \sharp 3. A \natural 4. D \sharp 5. C \times 6. F $\flat\flat$ 7. A \flat 8. E \sharp 9. B \times 10. G \natural

D. Tenor Clef



1. B \flat 2. G \sharp 3. A \natural 4. D \sharp 5. C \times 6. F $\flat\flat$ 7. A \flat 8. E \sharp 9. B \times 10. G \natural