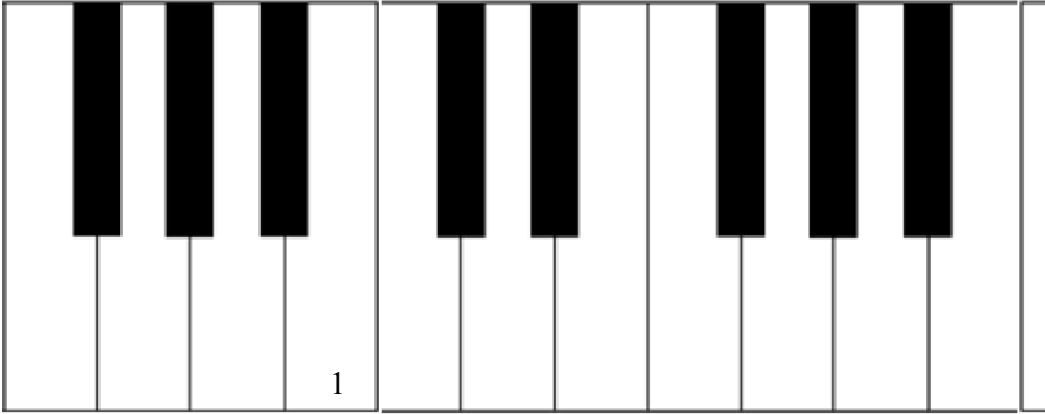


Name: _____

The Piano Keyboard and the Grand Staff with Ledger Lines

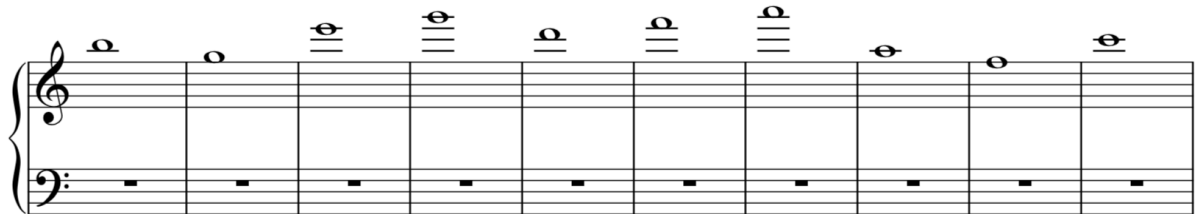
1. “The Grand Staff and the Piano Keyboard with Ledger Lines” Directions: Write the numbers of the notes found on the grand staves onto the white keys of the piano keyboard. Some keys may have more than one number. Number one has been done in each example.

A.



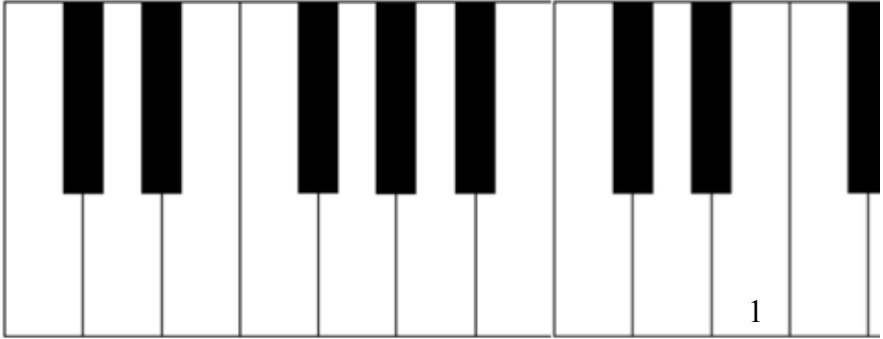
A diagram of a piano keyboard showing 10 white keys. The first key (C4) is labeled with the number '1'. The keys are numbered 1 through 10 from left to right.

1. 2. 3. 4. 5. 6. 7. 8. 9. 10.



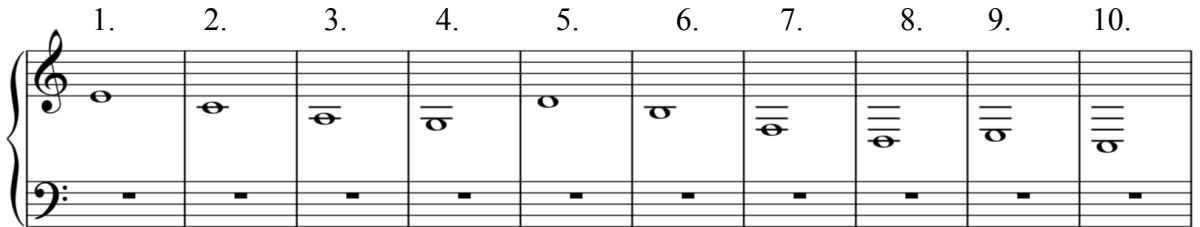
Musical notation for example A. The grand staff consists of a treble clef and a bass clef. The treble clef has notes on ledger lines: C4 (below two lines), D4 (below one line), E4 (below one line), F4 (below one line), G4 (below one line), A4 (below one line), B4 (below one line), C5 (below one line), D5 (below one line), and E5 (below one line). The bass clef has a whole rest in each of the ten measures.

B.



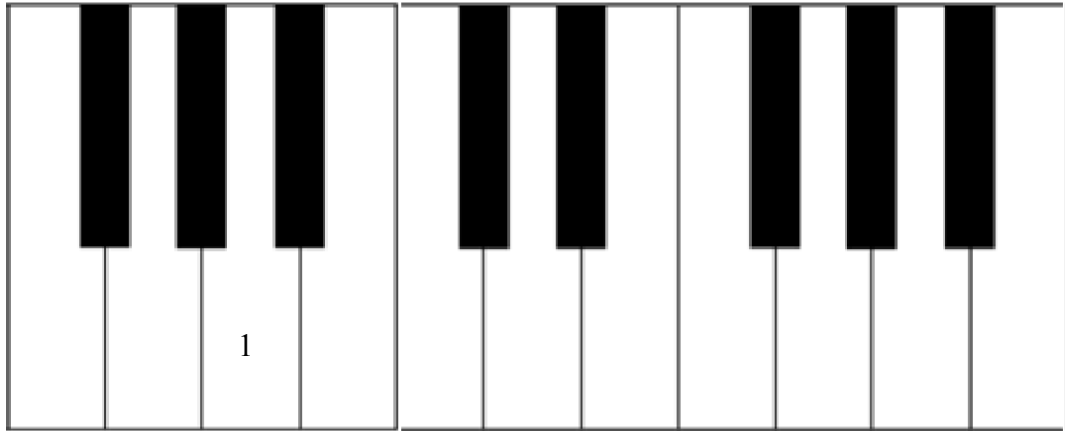
A diagram of a piano keyboard showing 10 white keys. The eighth key (G4) is labeled with the number '1'. The keys are numbered 1 through 10 from left to right.

1. 2. 3. 4. 5. 6. 7. 8. 9. 10.

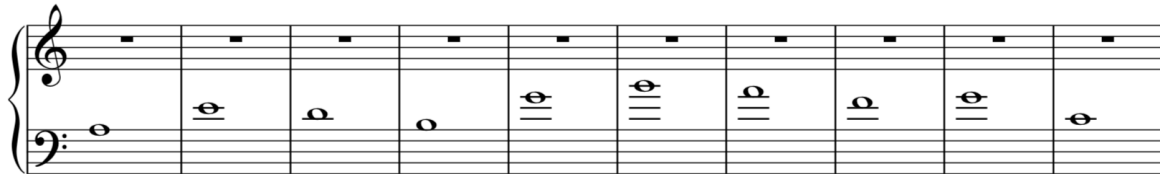


Musical notation for example B. The grand staff consists of a treble clef and a bass clef. The treble clef has notes on ledger lines: C4 (below two lines), D4 (below one line), E4 (below one line), F4 (below one line), G4 (below one line), A4 (below one line), B4 (below one line), C5 (below one line), D5 (below one line), and E5 (below one line). The bass clef has a whole rest in each of the ten measures.

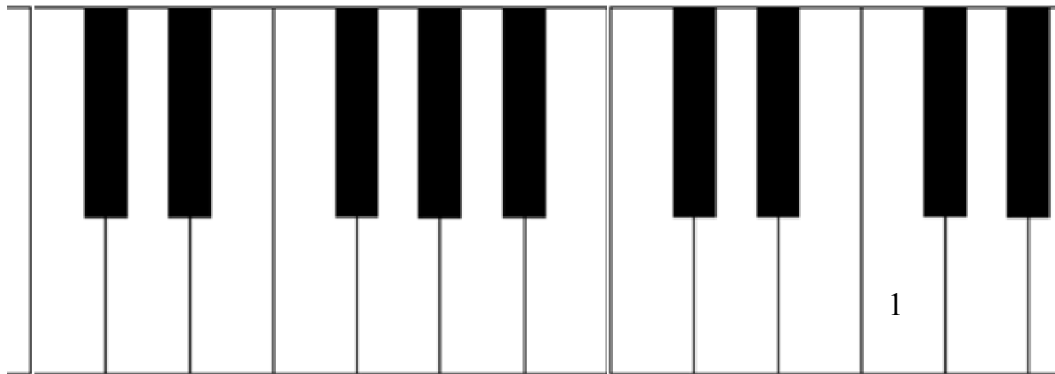
C.



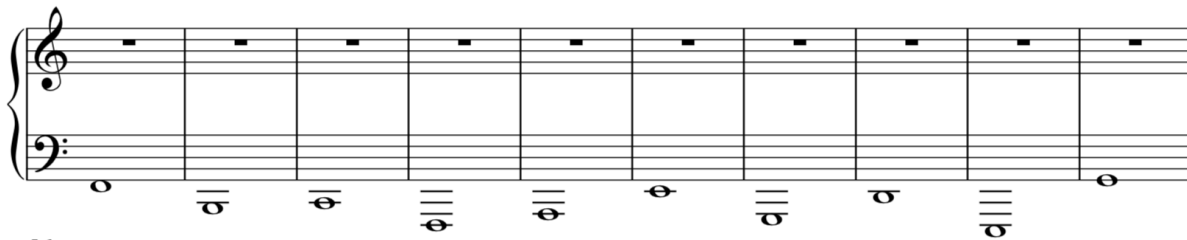
1. 2. 3. 4. 5. 6. 7. 8. 9. 10.



D.



1. 2. 3. 4. 5. 6. 7. 8. 9. 10.





1. 2. 3. 4. 5. 6. 7. 8. 9. 10.

Musical notation for the E major triad in the right hand, numbered 1 through 10. The notation shows the notes E, G, and B in the right hand, with the number 1 indicating the first finger.