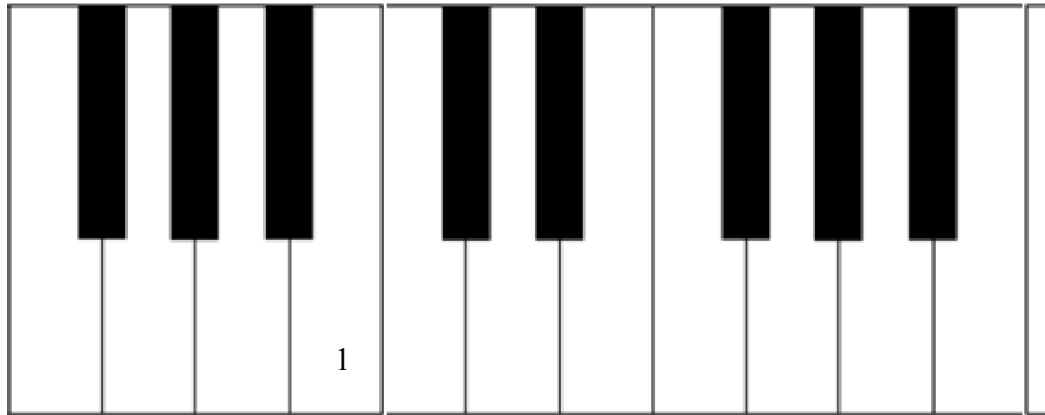


Name: \_\_\_\_\_

## The Piano Keyboard and the Grand Staff with Ledger Lines

1. “The Grand Staff and the Piano Keyboard with Ledger Lines” Directions: Write the numbers of the notes found on the grand staves onto the white keys of the piano keyboard. Some keys may have more than one number. Number one has been done in each example.

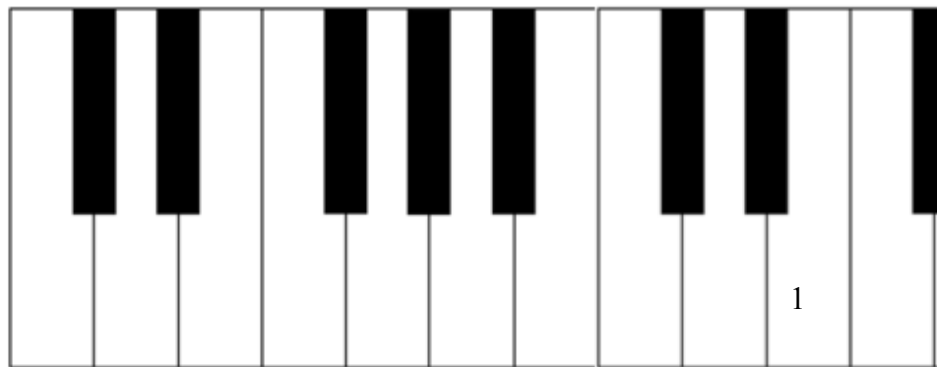
A.



1. 2. 3. 4. 5. 6. 7. 8. 9. 10.

Musical notation for example A. The grand staff consists of a treble clef and a bass clef. The notes are: 1 (C4, treble), 2 (D4, treble), 3 (E4, treble), 4 (F4, treble), 5 (G4, treble), 6 (A4, treble), 7 (B4, treble), 8 (C5, treble), 9 (D5, treble), and 10 (E5, treble). The bass clef has ledger lines below the staff.

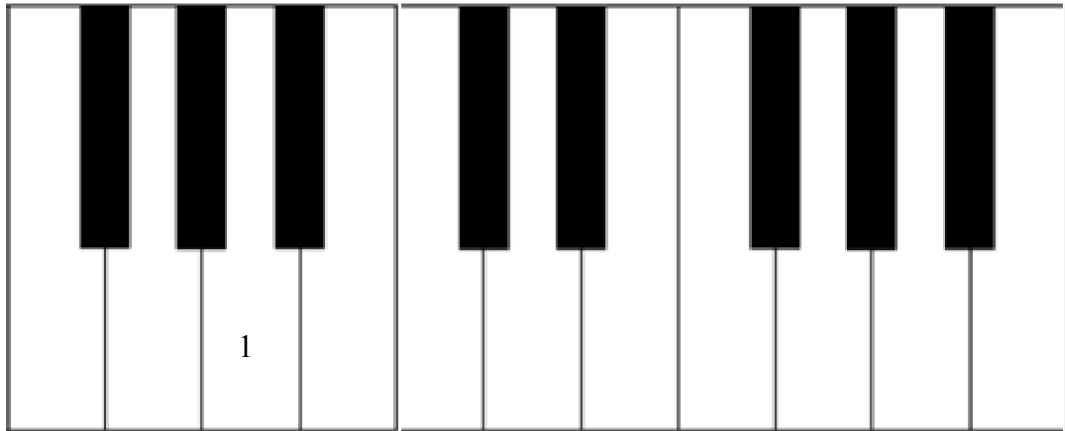
B.



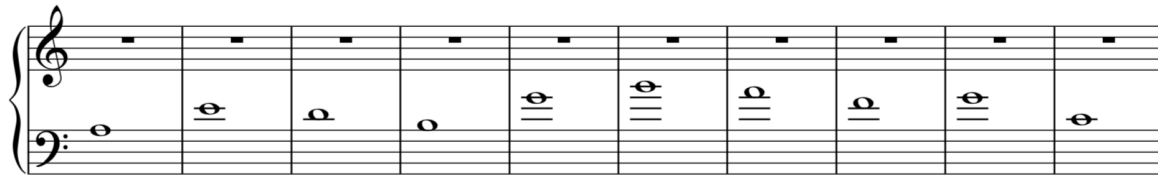
1. 2. 3. 4. 5. 6. 7. 8. 9. 10.

Musical notation for example B. The grand staff consists of a treble clef and a bass clef. The notes are: 1 (C4, treble), 2 (D4, treble), 3 (E4, treble), 4 (F4, treble), 5 (G4, treble), 6 (A4, treble), 7 (B4, treble), 8 (C5, treble), 9 (D5, treble), and 10 (E5, treble). The bass clef has ledger lines below the staff.

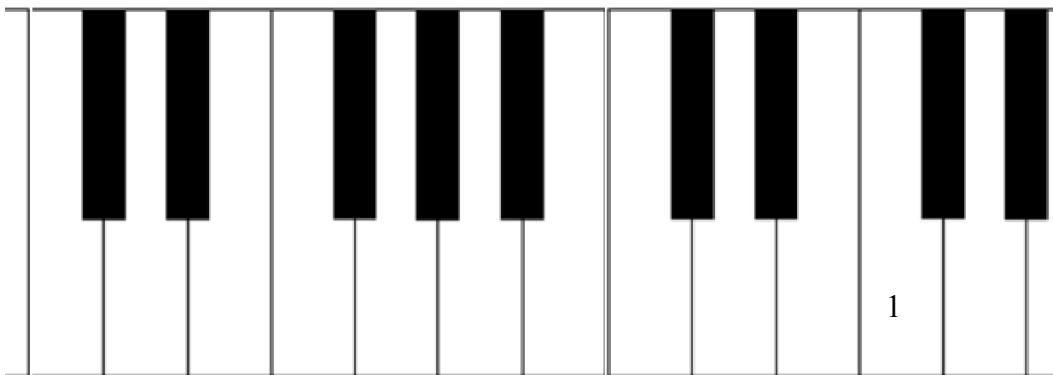
C.



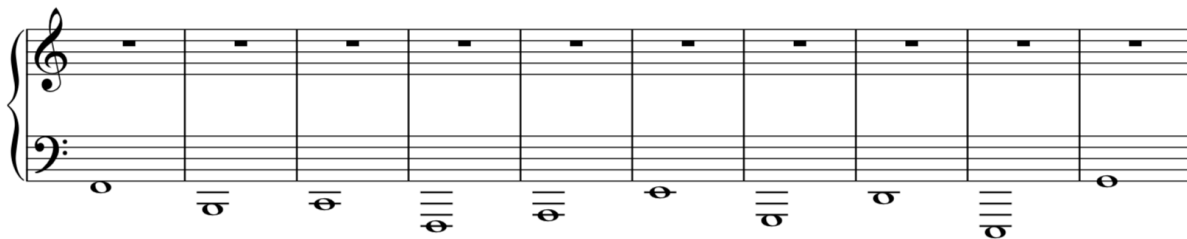
1. 2. 3. 4. 5. 6. 7. 8. 9. 10.



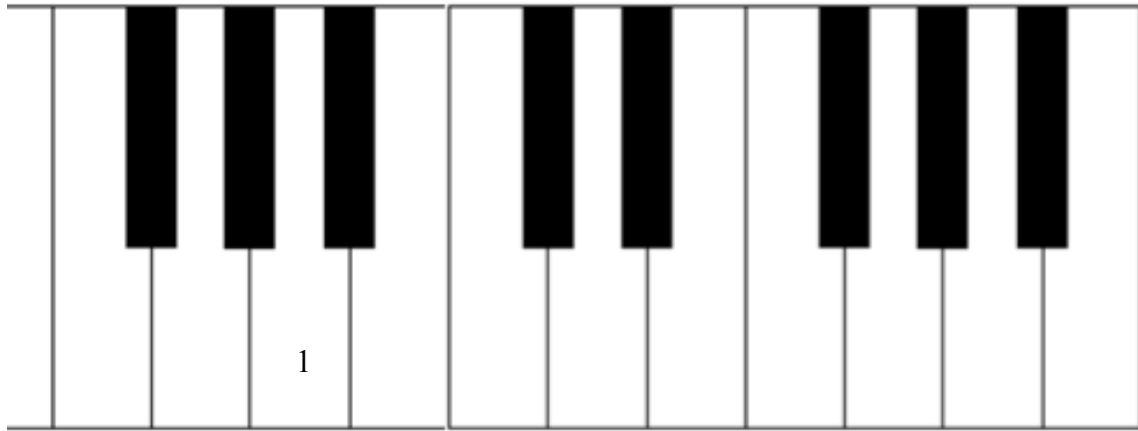
D.



1. 2. 3. 4. 5. 6. 7. 8. 9. 10.



E.



1. 2. 3. 4. 5. 6. 7. 8. 9. 10.

Musical notation for ten exercises. Each exercise consists of a single note in the bass clef and a whole rest in the treble clef. The notes in the bass clef are: 1. E2, 2. F2, 3. G2, 4. A2, 5. B2, 6. C3, 7. D3, 8. E3, 9. F3, 10. G3.