

---

# Hybrid Phrase-level Forms – Composing Phrase-level Forms

Name: \_\_\_\_\_

**Summary:** On the following pages, compose four different 8-measure themes for piano solo, each following a different phrase-level form as described.

Select from the basic ideas in the “Basic Idea Bank” below to get started on each. For each theme, provide a melody and simple bass line (no inner voices). Provide a segmentation analysis for each theme you write, and label the theme type you wrote.

Be prepared to perform your compositions.

## Basic Idea Bank

Basic Idea A



Basic Idea D



Basic Idea B



Basic Idea E



Basic Idea C

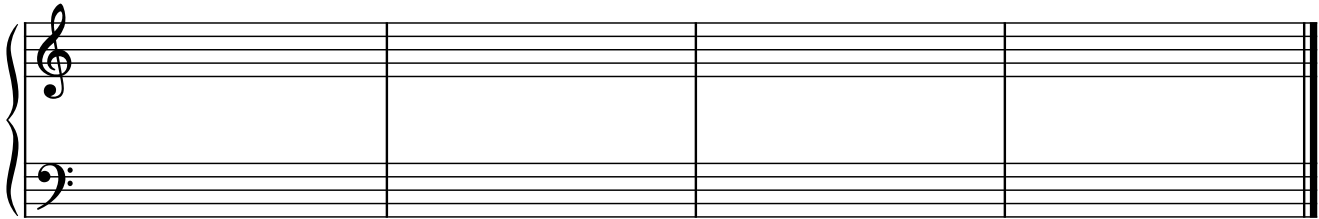
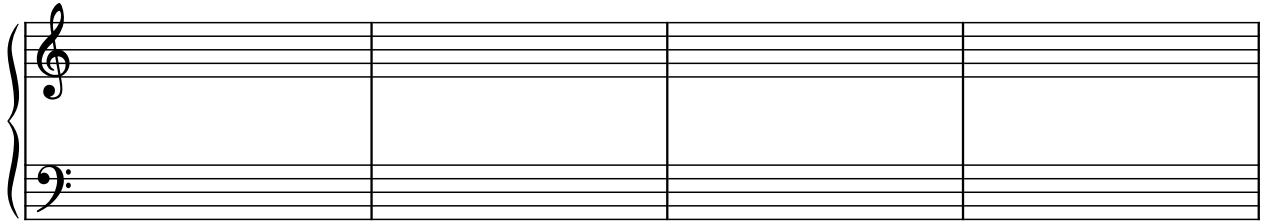


## Composing Phrase-level Forms

Select one basic idea from the “Basic Idea Bank” on page one. Provide a melody and simple bass line (no inner voices). Provide a segmentation analysis above the staff, and label the theme type you wrote.

**Excerpt #1: Compose a theme that starts like a period, and ends like a sentence.**

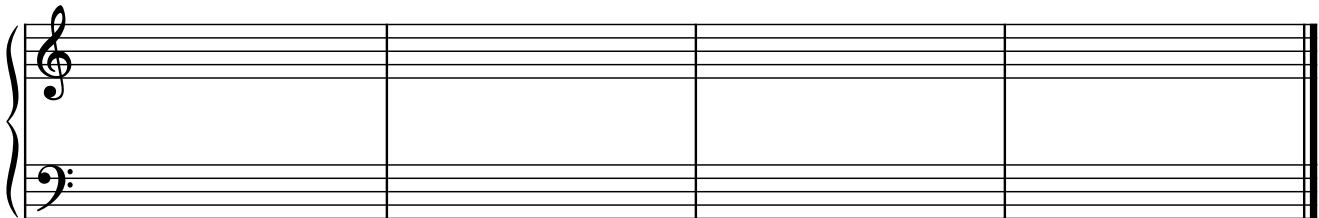
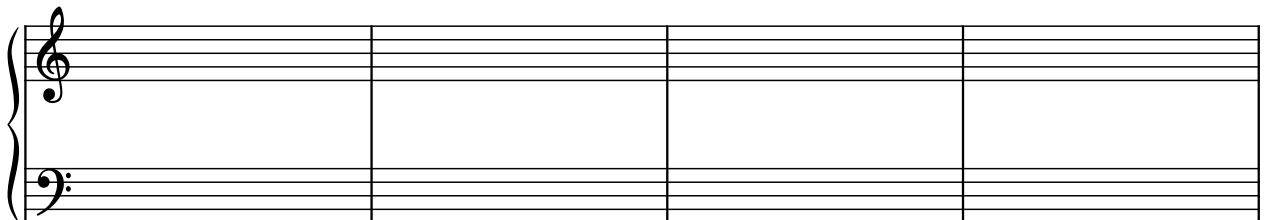
Theme Type: \_\_\_\_\_



---

**Excerpt #2: Compose a theme that starts like a sentence, then ends with a cadential progression that replaces the expected continuation.**

Theme Type: \_\_\_\_\_

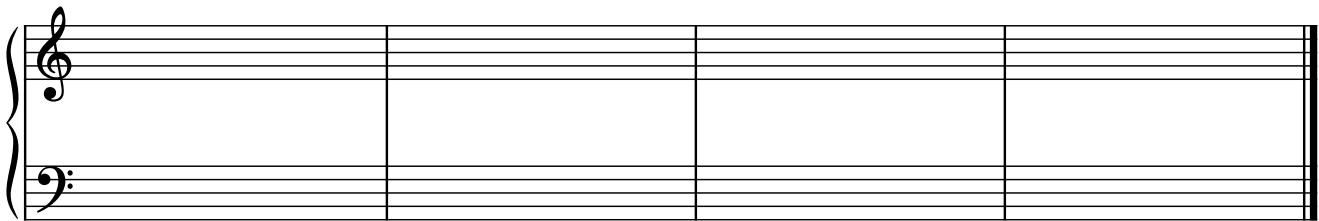
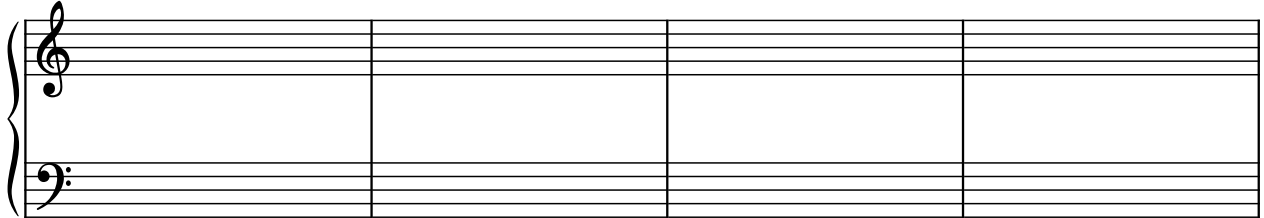


## Composing Phrase-level Forms

Select one basic idea from the “Basic Idea Bank” on page one. Provide a melody and simple bass line (no inner voices). Provide a segmentation analysis above the staff, and label the theme type you wrote.

**Excerpt #3: Compose a theme that starts like a period, but the first half doesn’t end with a cadence. End this theme like a sentence.**

Theme Type: \_\_\_\_\_



---

**Excerpt #4: Compose a theme that starts like a period, but the start of the second half makes us question the cadence that ends the first half (i.e. is this really an antecedent??). End this theme like a period.**

Theme Type: \_\_\_\_\_

