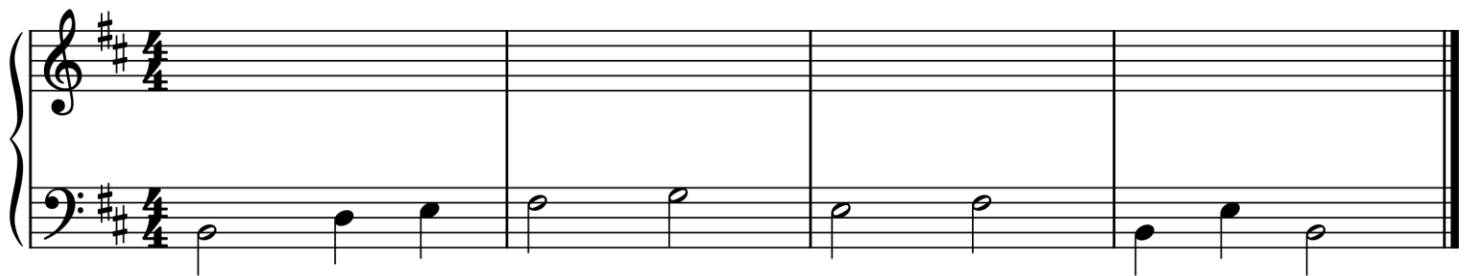

Mi (3̂) in the Bass at Beginnings

Name: _____

Part 1: Unfigured bass

1. Play or sing through the given bass line.
2. Label the key.
3. Label every bass pitch with solfège.
4. Provide a harmonic analysis that uses progressions we have read about in the textbook according to the bass line patterns you've identified by labeling the pitches with solfège
5. Identify how the phrase model operates in the excerpt using the labels Tb-PD-D-Te
6. Realize the progression in four parts
7. Label the cadence you wrote.



(key)

Part 2: Analysis: Beethoven, “Urians Reise um die Welt” Op. 52, No. 1.

1. Listen to Urian’s first stanza here:
<https://open.spotify.com/track/2EGJPeOaqdhgZFiaACMeYE?si=5118c04e62ff4e0b>
2. Label the key (score on next page)
3. Labels for all cadences in the excerpt
4. Provide a harmonic analysis
5. Identify how the phrase model operates in the excerpt using the labels Tb-PD-D-Te

Mi (♮) in the Bass at Beginnings

Name: _____

In einer mässigen geschwinden Bewegung mit einer komischen Art gesungen.

Singstimme.

PIANOFORTE.

1. Wenn jemand eine Reise thut, sokann er was ver_zählen. Drumnahmich meinenStock und Hut und

thät das Reisen wählen.

Part 3: Transcription and analysis: Weezer, “Dreamin”

- The score on the next page shows the vocal line and the harmonic rhythm (speed at which chords change) for the first chorus of Weezer’s “Dreamin”:
<https://open.spotify.com/track/76fPCApSm83NPiLDC4o07u?si=4cbd6a486d2343eb> (@ 0:15)
- Notate the bass. You should have one bass note per chord change, and your bass line should be very repetitive.
- It’s common for pop songs to use mostly root position chords, and this song is no exception. Using your notated bass line as a guide, provide a Roman numeral analysis of the chord changes in this song (one numeral per bass note).
 - Hint: you should find that it follows a chord progression we studied in class!
- Do you think the repetitiveness of the chord progression means that the verse ends without a cadence/closure? Briefly discuss in the blank space below.

Mi (♩) in the Bass at Beginnings

Name: _____

Voice

I'm dream - ing in the morn-ing I'm dreaming all through the night _____ and

Bass

Harmonic rhythm

5

when I'm dream-ing I know - that it's al - right _____ . Woo__ ooh oh _____ I'm...

5