

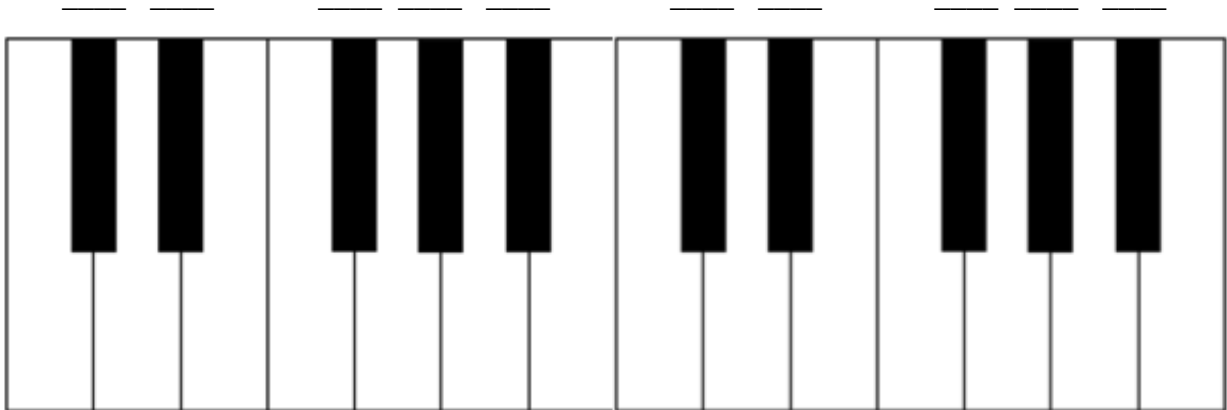
Black Keys on the Piano

Name: _____

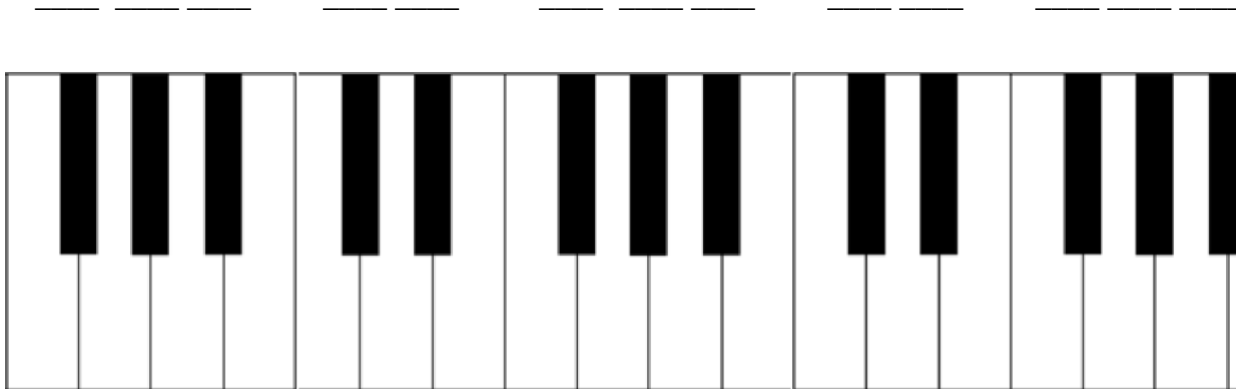
PART 1: Identifying Black Keys on the Piano Keyboard

Directions: Write letter names in the blanks above the black keys of the pianos. Notice that the pattern of black keys changes between examples.

A. Use sharps:

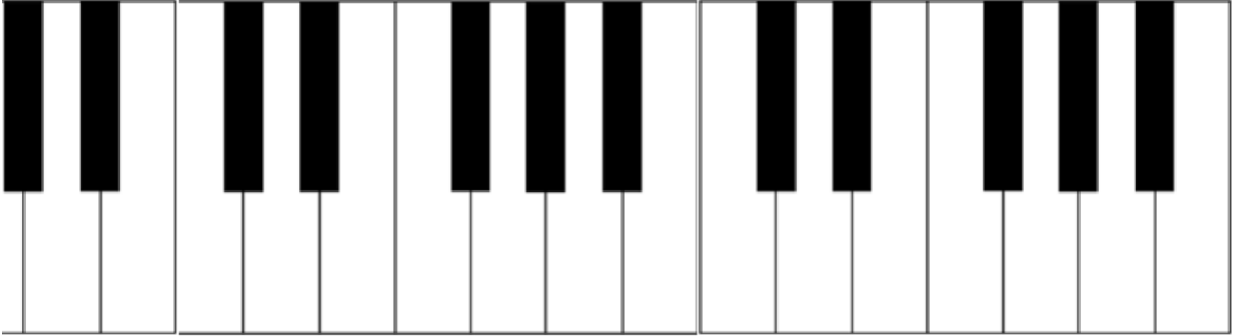


B. Use flats:



Black Keys on the Piano

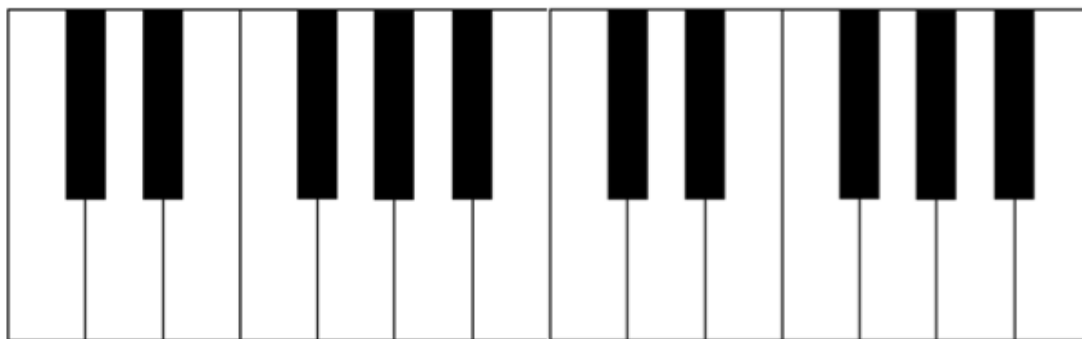
C. Use sharps and flats:



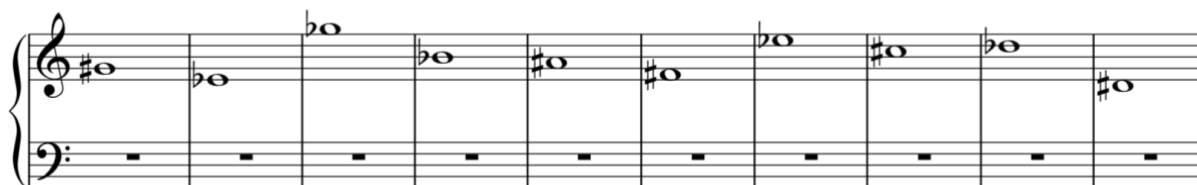
PART 2: The Grand Staff and the Black Keys on the Piano Keyboard

Directions: Write the number of the notes found on the grand staves onto the blanks above the black keys of the piano keyboards. Some keys will have more than one number and not every blank will be used. Number one has been done in each example.

A. Treble Clef

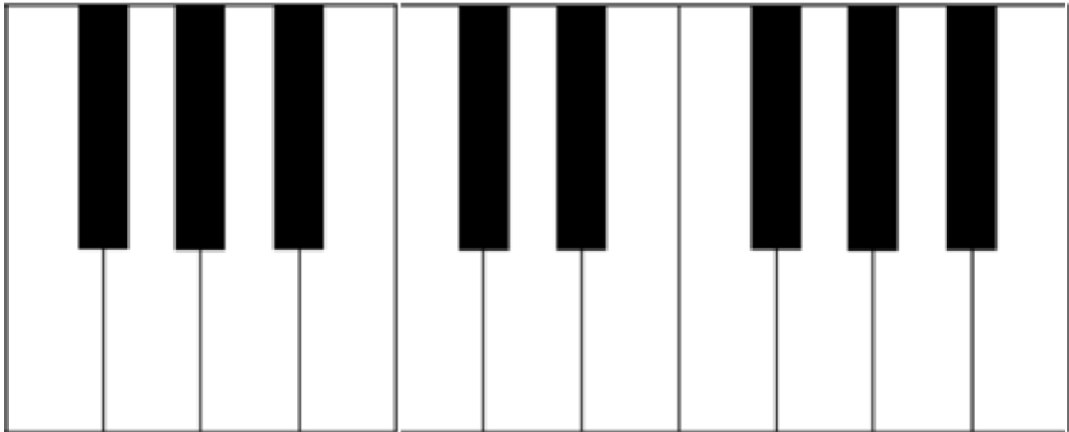


1. 2. 3. 4. 5. 6. 7. 8. 9. 10.



Black Keys on the Piano

B. Bass Clef

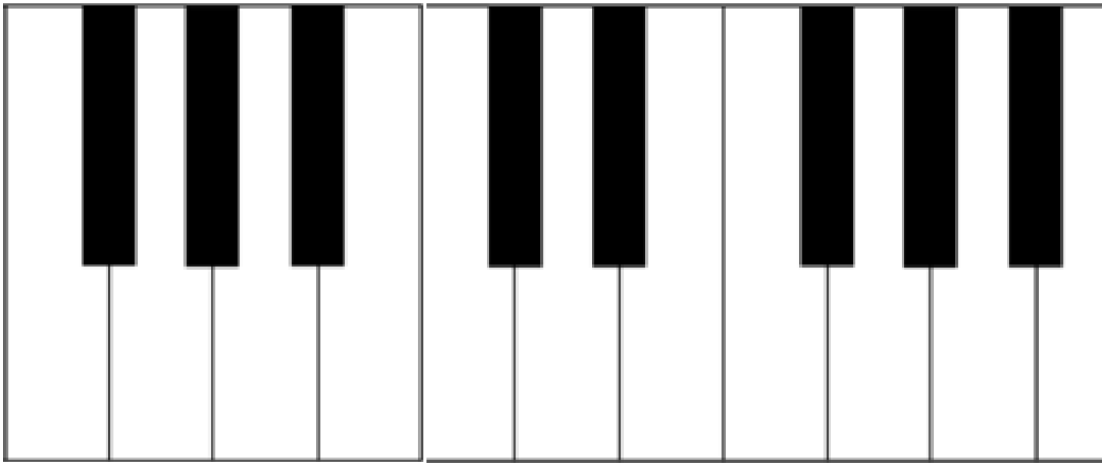
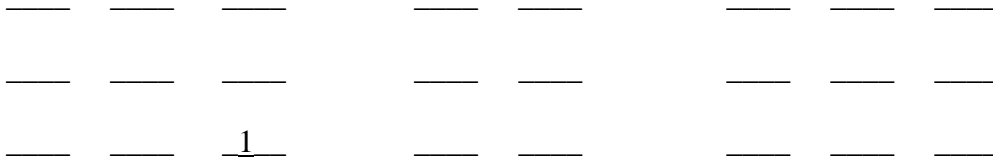


1. 2. 3. 4. 5. 6. 7. 8. 9. 10.



Black Keys on the Piano

C. With Ledger Lines



1. 2. 3. 4. 5. 6. 7. 8. 9. 10.

Musical score for ten measures. The first measure has a treble clef and a bass clef. The second measure has a treble clef. The third measure has a treble clef and a bass clef. The fourth measure has a treble clef and a bass clef. The fifth measure has a treble clef and a bass clef. The sixth measure has a treble clef and a bass clef. The seventh measure has a treble clef and a bass clef. The eighth measure has a treble clef and a bass clef. The ninth measure has a treble clef and a bass clef. The tenth measure has a treble clef and a bass clef.