

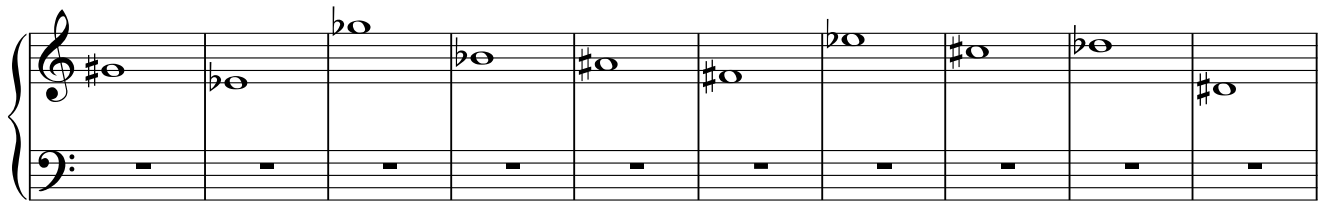
# Half and Whole Steps in Staff Notation

Name: \_\_\_\_\_

## PART 1: Drawing Half and Whole Steps

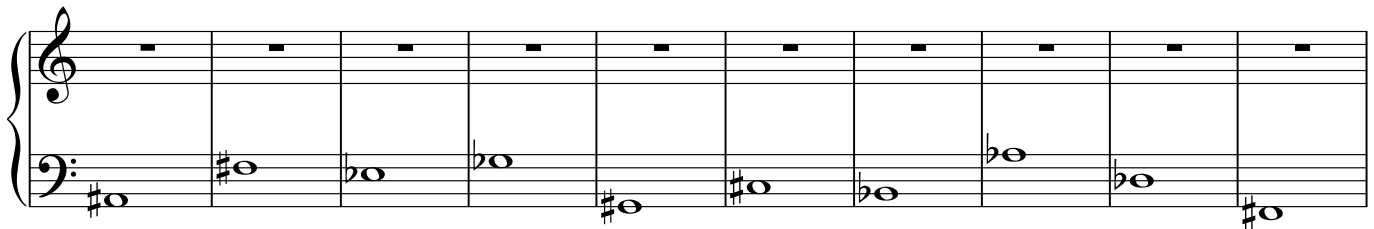
**Directions:** Draw notes a half or whole step above or below the indicated notes.

A. Draw an open note head a half step up from each of the given notes.



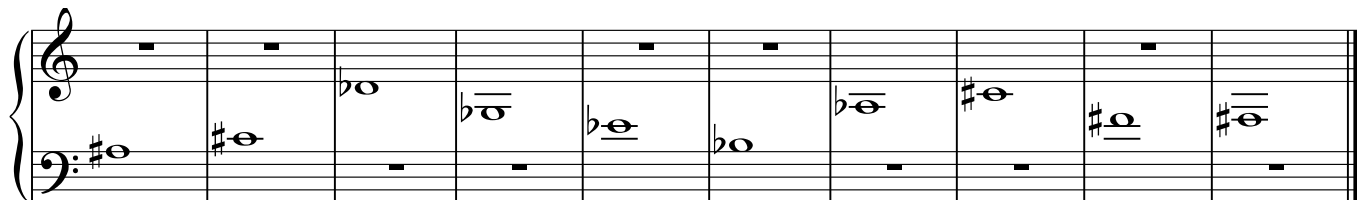
A musical staff with a treble clef and a key signature of one sharp (F#). The staff contains ten measures. The notes in the treble clef are: G4 (first measure), Bb4 (second), Bb4 (third), Bb4 (fourth), B4 (fifth), B4 (sixth), B4 (seventh), B4 (eighth), B4 (ninth), and B4 (tenth). The bass clef contains rests in all ten measures.

B. Draw an open note head a half step down from each of the given notes.



A musical staff with a bass clef and a key signature of one sharp (F#). The staff contains ten measures. The notes in the bass clef are: G3 (first), G3 (second), F#3 (third), F#3 (fourth), F#3 (fifth), F#3 (sixth), F#3 (seventh), F#3 (eighth), F#3 (ninth), and G3 (tenth). The treble clef contains rests in all ten measures.

C. Draw an open note head a whole step up from each of the given notes.



A musical staff with a bass clef and a key signature of one sharp (F#). The staff contains ten measures. The notes in the bass clef are: G3 (first), G3 (second), G3 (third), G3 (fourth), G3 (fifth), G3 (sixth), G3 (seventh), G3 (eighth), G3 (ninth), and G3 (tenth). The treble clef contains rests in all ten measures.

D. Draw an open note head a whole step down from each of the given notes.

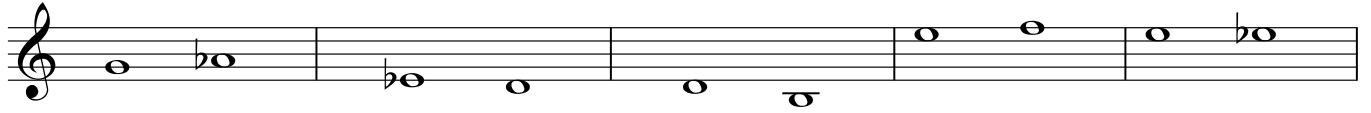


A musical staff with a treble clef and a key signature of one sharp (F#). The staff contains ten measures. The notes in the treble clef are: G4 (first), Bb4 (second), Bb4 (third), Bb4 (fourth), B4 (fifth), B4 (sixth), B4 (seventh), B4 (eighth), B4 (ninth), and B4 (tenth). The bass clef contains rests in all ten measures.

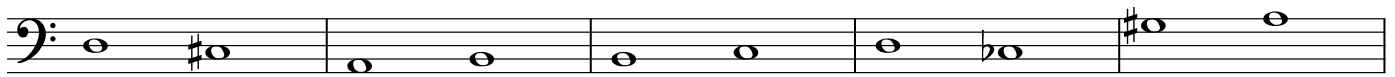
## Half and Whole Steps in Staff Notation

### PART 2: Identifying Half and Whole Steps

**Directions:** Identify each of the following pairs of notes as either a Half Step (H), Whole Step (W), or Neither (N).



1. \_\_\_\_\_ 2. \_\_\_\_\_ 3. \_\_\_\_\_ 4. \_\_\_\_\_ 5. \_\_\_\_\_



1. \_\_\_\_\_ 2. \_\_\_\_\_ 3. \_\_\_\_\_ 4. \_\_\_\_\_ 5. \_\_\_\_\_



1. \_\_\_\_\_ 2. \_\_\_\_\_ 3. \_\_\_\_\_ 4. \_\_\_\_\_ 5. \_\_\_\_\_