

Writing and Identifying Accidentals

Name: _____

PART 1: Identifying Notes with Accidentals

Directions: Write the letter name and accidental (e.g. C#) of the following notes in the blanks.

A. Treble Clef

A musical staff in treble clef with a key signature of one sharp (F#). The staff contains ten notes, each with an accidental. The notes are: 1. F# (first line), 2. Bb (second space), 3. D (third space), 4. Eb (second space), 5. G# (third space), 6. A# (third space), 7. Cb (second space), 8. E (third space), 9. F# (first line), 10. G# (third space).

1. _____ 2. _____ 3. _____ 4. _____ 5. _____ 6. _____ 7. _____ 8. _____ 9. _____ 10. _____

B. Bass Clef

A musical staff in bass clef with a key signature of one sharp (F#). The staff contains ten notes, each with an accidental. The notes are: 1. F# (first space), 2. G# (second space), 3. Ab (second space), 4. Bb (second space), 5. D# (third space), 6. E# (third space), 7. F# (first space), 8. G# (second space), 9. Ab (second space), 10. F# (first space).

1. _____ 2. _____ 3. _____ 4. _____ 5. _____ 6. _____ 7. _____ 8. _____ 9. _____ 10. _____

C. Ledger Lines

A musical staff in treble clef with a key signature of one sharp (F#). The staff contains ten notes, each with an accidental and positioned on ledger lines. The notes are: 1. F# (below first line), 2. G# (below first line), 3. Ab (below first line), 4. Bb (below first line), 5. Cb (below first line), 6. D (below first line), 7. Eb (below first line), 8. F# (below first line), 9. G# (below first line), 10. Ab (below first line).

1. _____ 2. _____ 3. _____ 4. _____ 5. _____ 6. _____ 7. _____ 8. _____ 9. _____ 10. _____

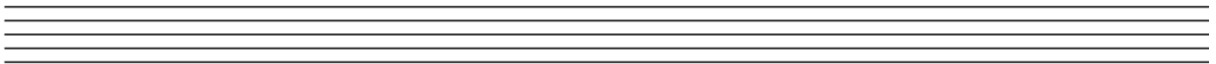
PART 2: Drawing Accidentals

Directions: Draw the indicated accidentals, on different lines and spaces.

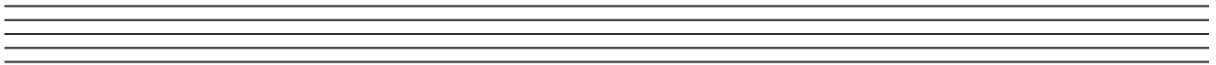
1. Draw five sharps.



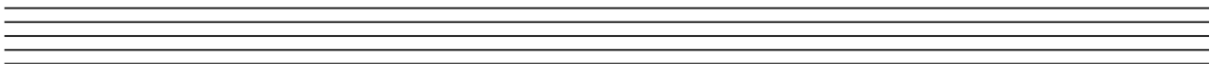
2. Draw five flats.



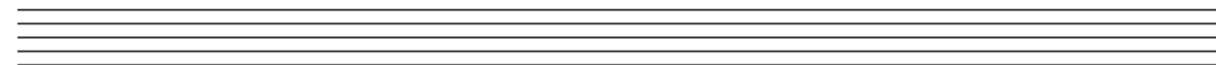
3. Draw five naturals.



4. Draw five double sharps.



5. Draw five double flats.



Writing and Identifying Accidentals

PART 3: Drawing Notes with Accidentals

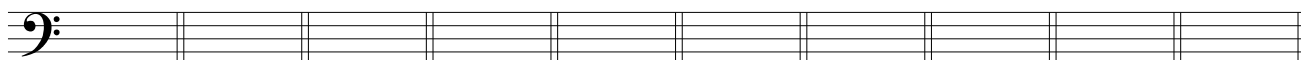
Directions: Draw the notes and their accidentals in the indicated clefs, in any octave.

A. Treble Clef



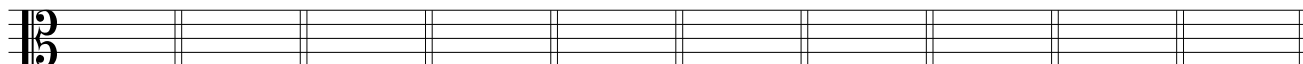
1. B \flat
2. G \sharp
3. A \natural
4. D \sharp
5. C \times
6. F \flat
7. A \flat
8. E \sharp
9. B \times
10. G \natural

B. Bass Clef



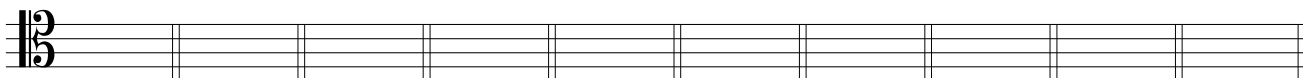
1. E \flat
2. A \sharp
3. D \natural
4. G \sharp
5. F \times
6. C \flat
7. B \flat
8. A \sharp
9. E \times
10. D \natural

C. Alto Clef



1. C \flat
2. F \sharp
3. B \natural
4. E \sharp
5. A \times
6. D \flat
7. G \flat
8. C \sharp
9. F \times
10. B \natural

D. Tenor Clef



1. D \flat
2. C \sharp
3. F \natural
4. B \sharp
5. E \times
6. A \flat
7. D \flat
8. G \sharp
9. C \times
10. F \natural