

Minor Scales B

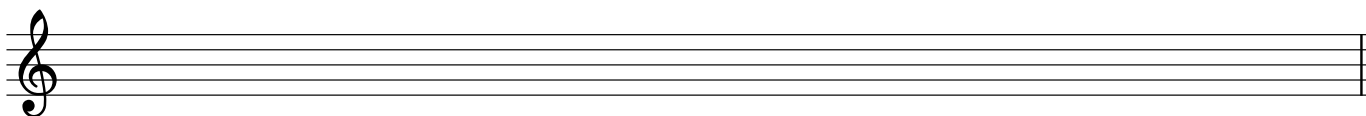
Treble/Bass only

Name: _____

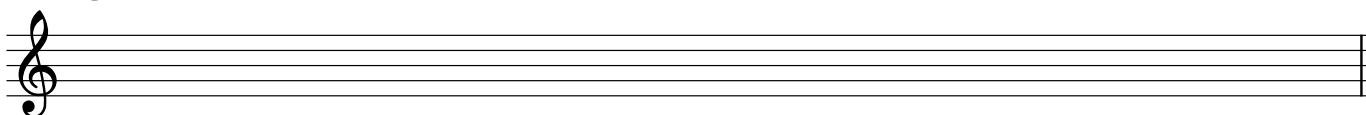
PART 1: Writing scales

Write the following minor scales using accidentals (no key signatures), ascending only unless otherwise specified.

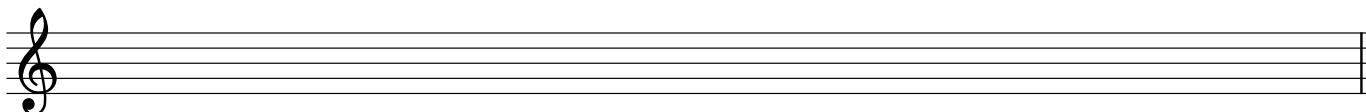
① E \flat harmonic minor



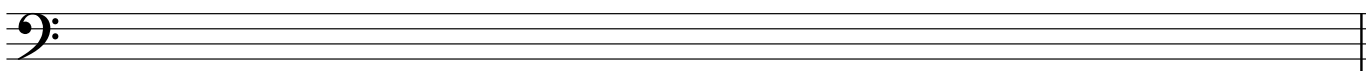
② C \sharp natural minor



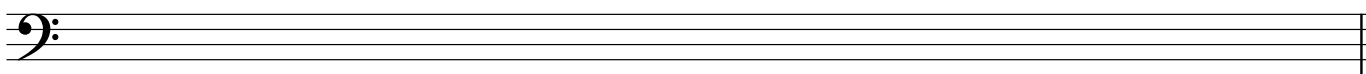
③ F natural minor



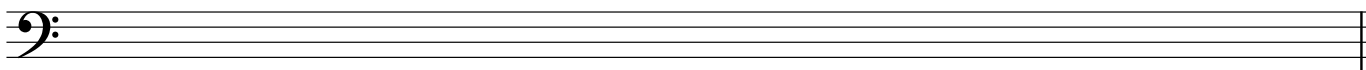
④ B \flat melodic minor (ascending *and descending*)



⑤ G harmonic minor



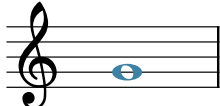
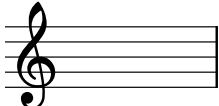
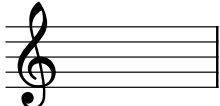
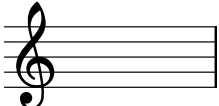
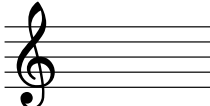
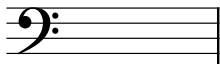
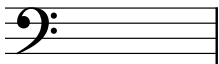
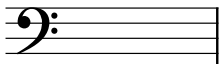
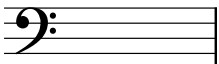
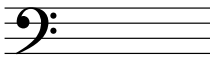
⑥ A melodic minor (ascending *and descending*)



PART 2: Writing scale degrees

- Given a minor key context and scale degree, write the appropriate note on the staff.
- Use accidentals as necessary (not key signatures).

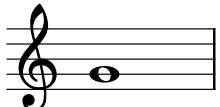
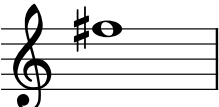
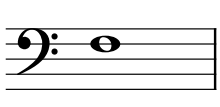
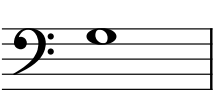

The first exercise has been completed for you as an example.

<p>⑦</p>  <p>Fmi: supertonic</p>	<p>⑧</p>  <p>D#mi: $\hat{6}$</p>	<p>⑨</p>  <p>Bmi: leading tone</p>	<p>⑩</p>  <p>F#mi: $\hat{4}$</p>	<p>⑪</p>  <p>Dmi: dominant</p>
<p>⑫</p>  <p>Ebmi: subtonic</p>	<p>⑬</p>  <p>G#mi: $\hat{3}$</p>	<p>⑭</p>  <p>Cmi: submediant</p>	<p>⑮</p>  <p>Emi: $\hat{5}$</p>	<p>⑯</p>  <p>Bbmi: $\hat{2}$</p>

PART 3: Identifying scale degrees by number

- Given a key context and a note, name the scale degree number.
- Include the caret symbol above the number to show that it is a scale degree.

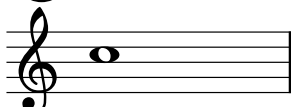
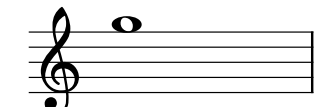
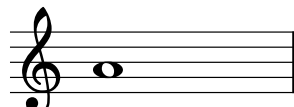

The first exercise has been completed for you as an example.

<p>⑰</p>  <p>Emi: <u>$\hat{3}$</u></p>	<p>⑱</p>  <p>G#mi: _____</p>	<p>⑲</p>  <p>Bbmi: _____</p>	<p>⑳</p>  <p>Dmi: _____</p>	<p>㉑</p>  <p>Fmi: _____</p>
--	---	---	---	--

PART 4: Identifying scale degrees by name

- Given a key context and a note, name the scale degree with its name.

The first exercise has been completed for you as an example.

<p>㉒</p>  <p>Emi: <u>submediant</u></p>	<p>㉓</p>  <p>Bmi: _____</p>	<p>㉕</p>  <p>Bbmi: _____</p>	<p>㉖</p>  <p>Gmi: _____</p>
--	--	--	--