

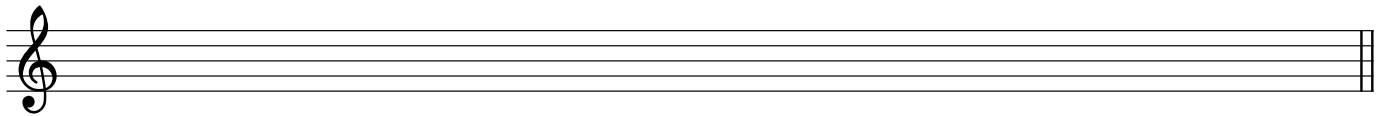
# Minor Scales B

Name: \_\_\_\_\_

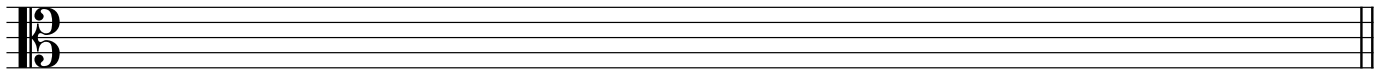
## PART 1: Writing scales

Write the following minor scales using accidentals (no key signatures), ascending only unless otherwise specified.

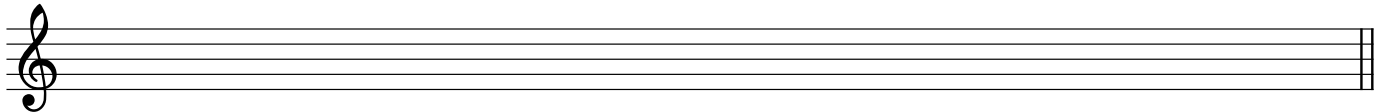
① E $\flat$  harmonic minor



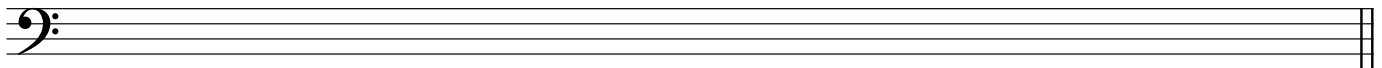
② C $\sharp$  natural minor



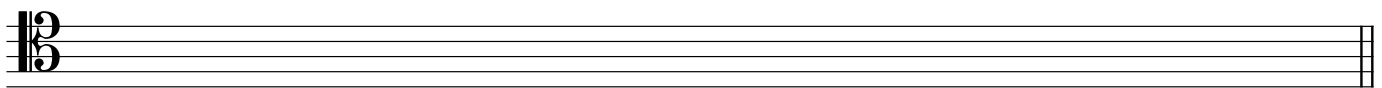
③ F natural minor



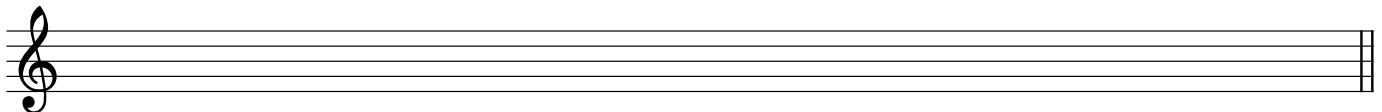
④ B $\flat$  melodic minor (ascending *and descending*)



⑤ G harmonic minor



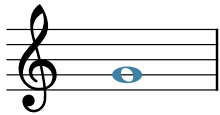
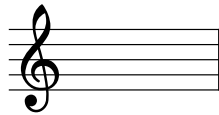
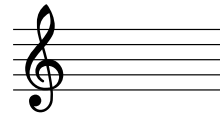
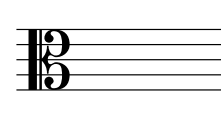
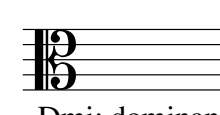
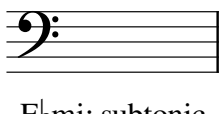
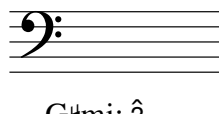
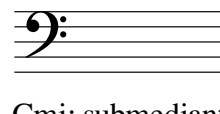


⑥ A melodic minor (ascending *and descending*)



## PART 2: Writing scale degrees

- Given a minor key context and scale degree, write the appropriate note on the staff.
- Use accidentals as necessary (not key signatures).

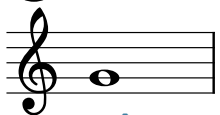
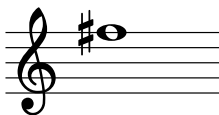
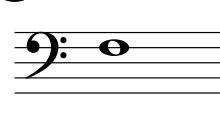
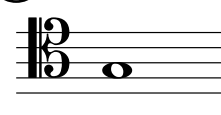
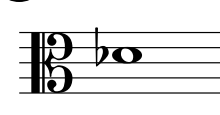
The first exercise has been completed for you as an example.

|   |  |   |   |  |
|---|--|---|---|--|
| <p>⑦</p>  <p>Fmi: supertonic</p> | <p>⑧</p>  <p>D#mi: <math>\hat{6}</math></p> | <p>⑨</p>  <p>Bmi: leading tone</p> | <p>⑩</p>  <p>F#mi: <math>\hat{4}</math></p> | <p>⑪</p>  <p>Dmi: dominant</p>              |
| <p>⑫</p>  <p>Ebmi: subtonic</p>  | <p>⑬</p>  <p>G#mi: <math>\hat{3}</math></p> | <p>⑭</p>  <p>Cmi: submediant</p>   | <p>⑮</p>  <p>Emi: <math>\hat{5}</math></p>  | <p>⑯</p>  <p>Bbmi: <math>\hat{2}</math></p> |

## PART 3: Identifying scale degrees by number

- Given a key context and a note, name the scale degree number.
- Include the caret symbol above the number to show that it is a scale degree.



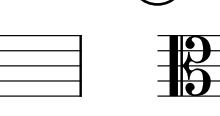
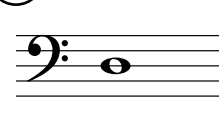
The first exercise has been completed for you as an example.

|  |   |   |   |  |
|--|---|---|---|--|
| <p>⑰</p>  <p>Emi: <u><math>\hat{3}</math></u></p> | <p>⑱</p>  <p>G#mi: _____</p> | <p>⑲</p>  <p>Bbmi: _____</p> | <p>⑳</p>  <p>Dmi: _____</p> | <p>㉑</p>  <p>Fmi: _____</p> |
|--|---|---|---|--|

## PART 4: Identifying scale degrees by name

- Given a key context and a note, name the scale degree with its name.

The first exercise has been completed for you as an example.

|  |  |   |  |
|--|--|---|--|
| <p>⑳</p>  <p>Emi: <u>submediant</u></p> | <p>㉓</p>  <p>Bmi: _____</p> | <p>㉕</p>  <p>Bbmi: _____</p> | <p>㉖</p>  <p>Gmi: _____</p> |
|--|--|---|--|