

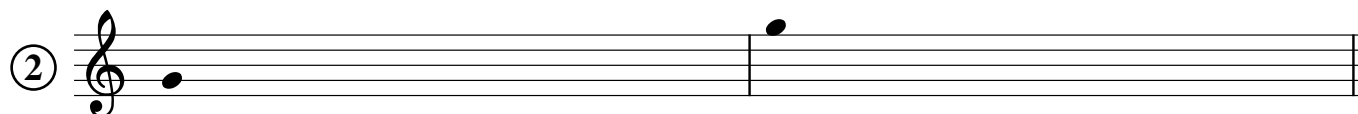
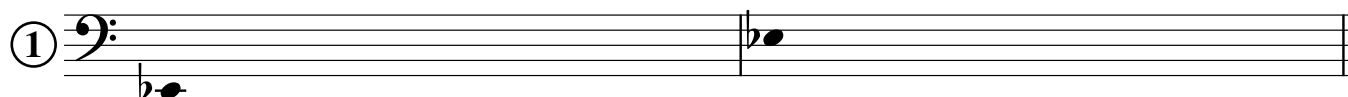
# Chromatic Scales B

Treble/Bass only

Name: \_\_\_\_\_

## PART 1: Chromatic scales ascending and descending

- Beginning on the given note, write a chromatic scale, ascending and descending.
- Be sure to use appropriate accidentals when ascending versus descending.

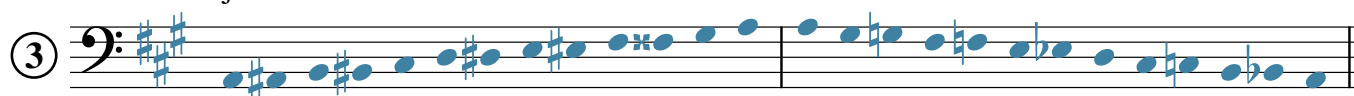


## PART 2: Chromatic scales in a key

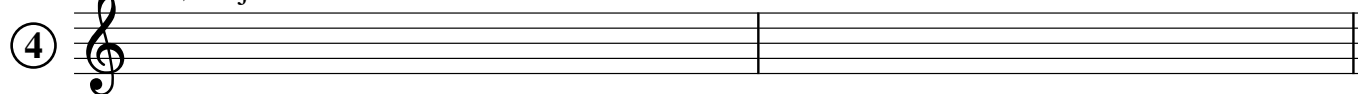
- Write the requested key signature on the staff.
- Write a chromatic scale that begins on tonic and uses raised scale degrees while ascending and lowered scale degrees while descending.

The first exercise is completed for you as an example.

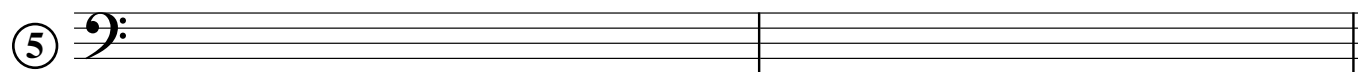
A major



B♭ major



E minor



C major

