

Diatonic Modes A

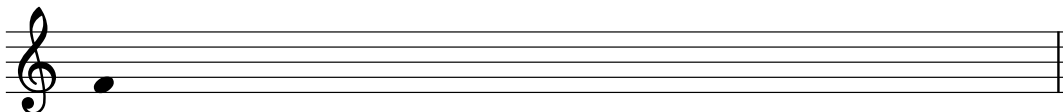
Treble and Bass Clef

Name: _____

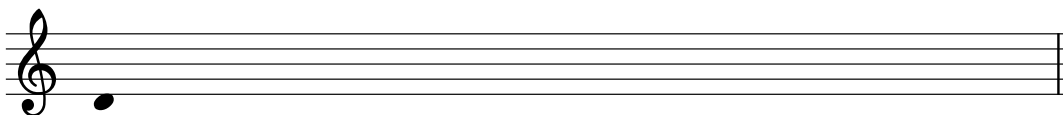
PART 1: Writing modal scales

Write the following scales using accidentals (no key signatures), ascending only.

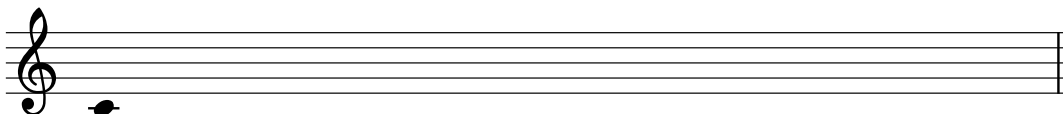
1. F dorian



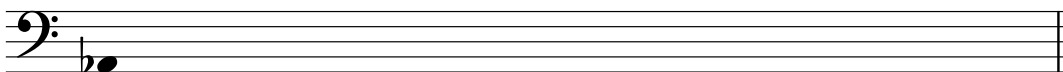
2. D mixolydian



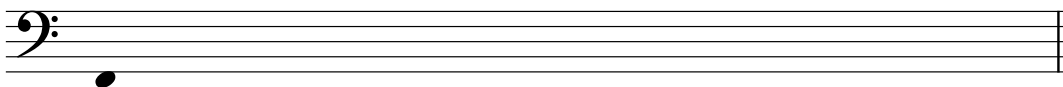
3. C phrygian



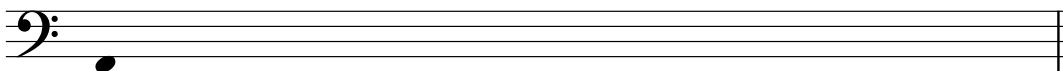
4. A \flat lydian



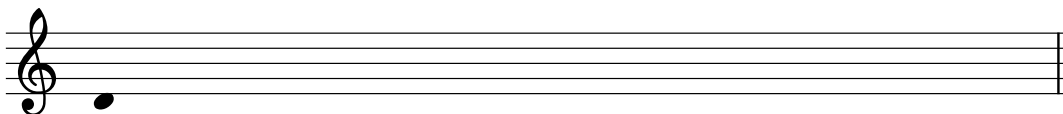
5. F ionian



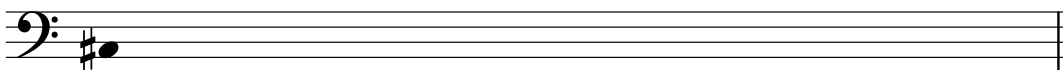
6. A locrian



7. D phrygian



8. C \sharp aeolian



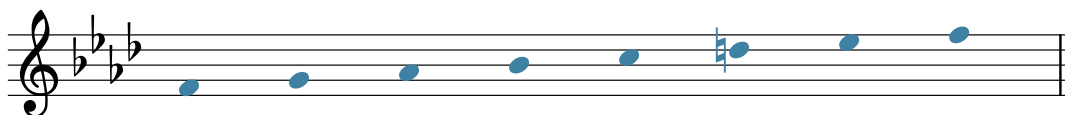
PART 2: Modes in a key signature

Below, you are given a mode and a key signature for its parallel major or minor scale.

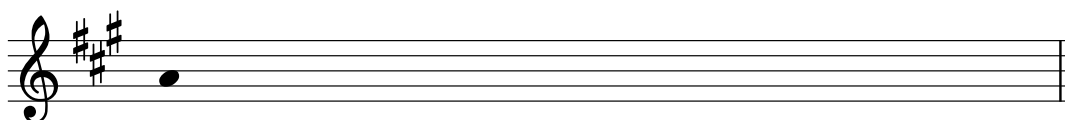
Write the requested mode as a scale, ascending only. You will need to add **one accidental** to create the mode.

The first exercise is completed for you as an example.

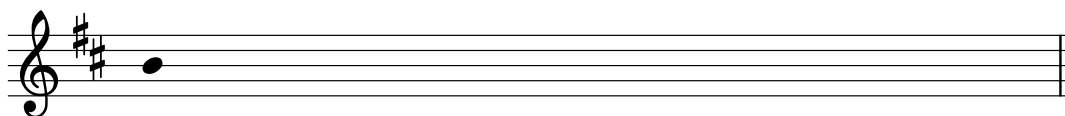
9. F dorian



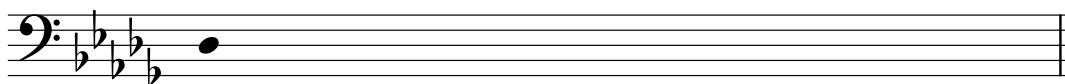
10. A mixolydian



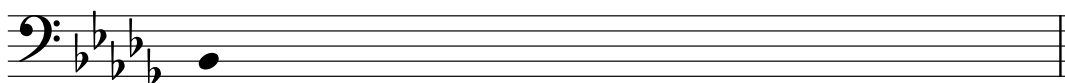
11. B phrygian



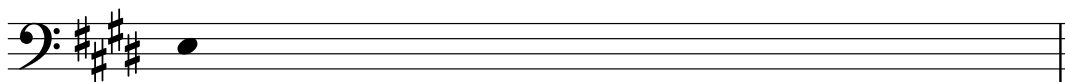
12. Db lydian



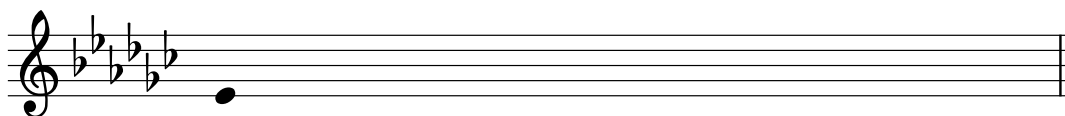
13. Bb phrygian



14. E mixolydian



15. Eb dorian



16. B lydian

