

Diatonic Modes B

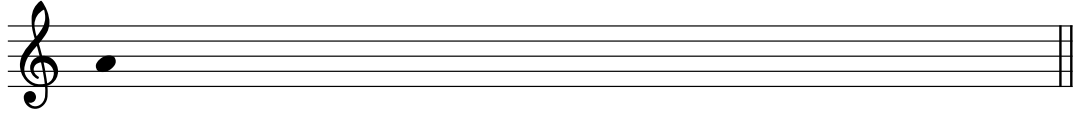
Treble and Bass Clef

Name: _____

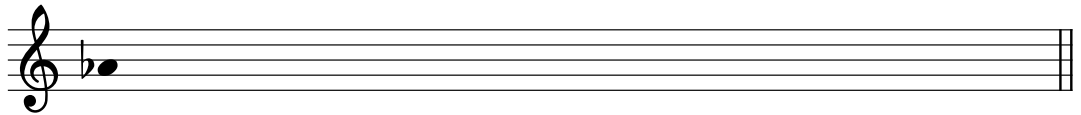
PART 1: Writing modal scales

Write the following scales using accidentals (no key signatures), ascending only.

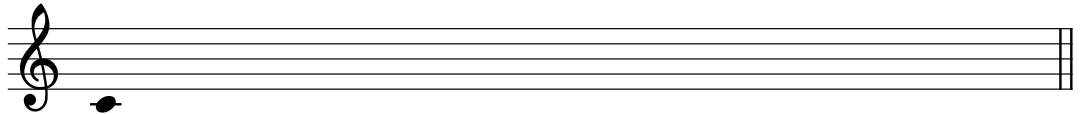
1. A lydian



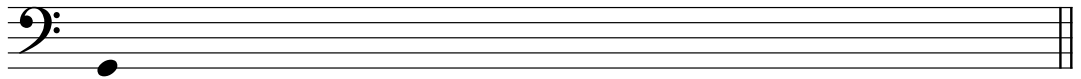
2. A \flat ionian



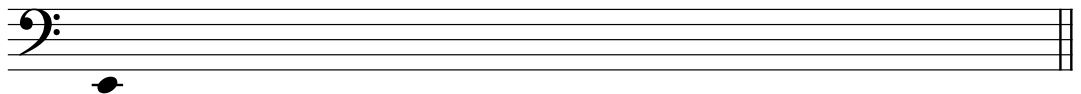
3. C dorian



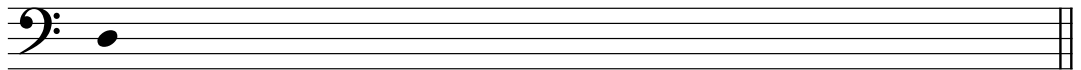
4. G locrian



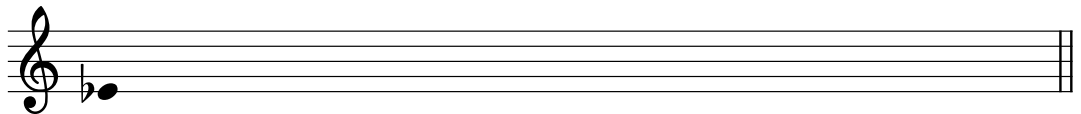
5. E aeolian



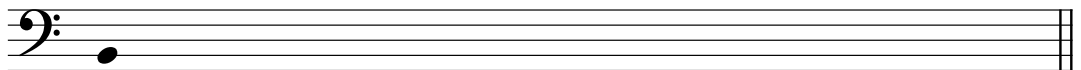
6. D phrygian



7. E \flat dorian



8. B mixolydian



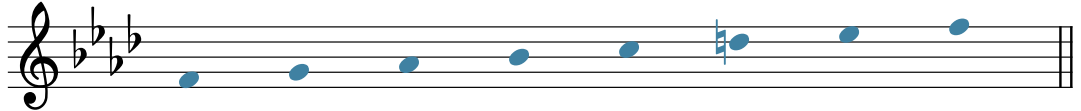
PART 2: Modes in a key signature

Below, you are given a mode and a key signature for its parallel major or minor scale.

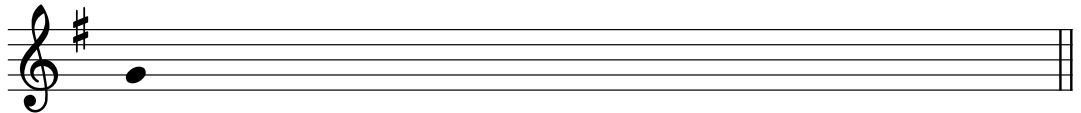
Write the requested mode as a scale, ascending only. You will need to add **one accidental** to create the mode.

The first exercise is completed for you as an example.

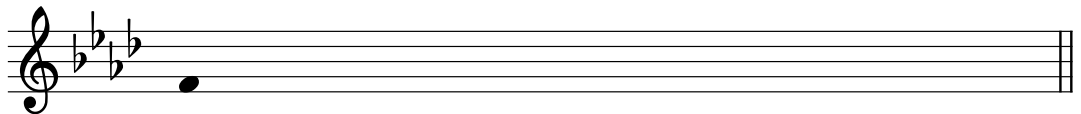
9. F dorian



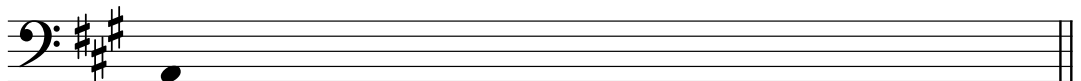
10. G mixolydian



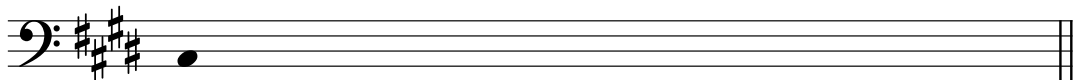
11. F phrygian



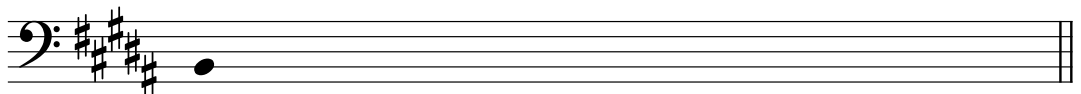
12. A lydian



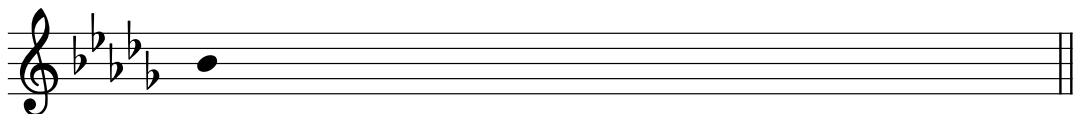
13. C# phrygian



14. B mixolydian



15. Bb dorian



16. D lydian

