

Name: \_\_\_\_\_

## Accidentals

1. **“Identifying Notes with Accidentals” Directions:** Write the letter name and accidental (e.g. C#) of the following notes in the blanks.

### A. Treble Clef

A musical staff in treble clef with a key signature of one sharp (F#). The staff contains ten whole notes. The notes and their accidentals are: 1. F# (first line), 2. Bb (second space), 3. D (third space), 4. Ab (second space), 5. C# (third space), 6. E# (third space), 7. Gb (second space), 8. A (second space), 9. Bb (second space), 10. C# (third space).

1. \_\_\_\_\_ 2. \_\_\_\_\_ 3. \_\_\_\_\_ 4. \_\_\_\_\_ 5. \_\_\_\_\_ 6. \_\_\_\_\_ 7. \_\_\_\_\_ 8. \_\_\_\_\_ 9. \_\_\_\_\_ 10. \_\_\_\_\_

### B. Bass Clef

A musical staff in bass clef with a key signature of one sharp (F#). The staff contains ten whole notes. The notes and their accidentals are: 1. F# (first space), 2. C# (first space), 3. Bb (second space), 4. Ab (second space), 5. C# (first space), 6. E# (first space), 7. Bb (second space), 8. Ab (second space), 9. Bb (second space), 10. F# (first space).

1. \_\_\_\_\_ 2. \_\_\_\_\_ 3. \_\_\_\_\_ 4. \_\_\_\_\_ 5. \_\_\_\_\_ 6. \_\_\_\_\_ 7. \_\_\_\_\_ 8. \_\_\_\_\_ 9. \_\_\_\_\_ 10. \_\_\_\_\_

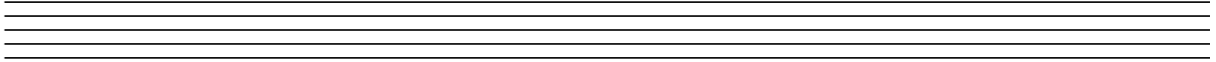
### C. Ledger Lines

A musical staff in treble clef with a key signature of one sharp (F#). The staff contains ten whole notes. The notes and their accidentals are: 1. F# (first space), 2. C# (first space), 3. Bb (second space), 4. Ab (second space), 5. Bb (second space), 6. Bb (second space), 7. Bb (second space), 8. C# (first space), 9. Ab (second space), 10. C# (first space).

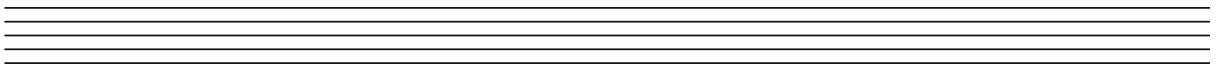
1. \_\_\_\_\_ 2. \_\_\_\_\_ 3. \_\_\_\_\_ 4. \_\_\_\_\_ 5. \_\_\_\_\_ 6. \_\_\_\_\_ 7. \_\_\_\_\_ 8. \_\_\_\_\_ 9. \_\_\_\_\_ 10. \_\_\_\_\_

2. **“Drawing Accidentals” Directions:** Draw the indicated accidentals, on different lines and spaces.

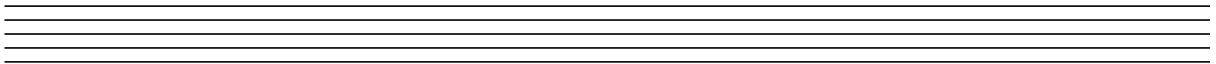
1. Draw five sharps.



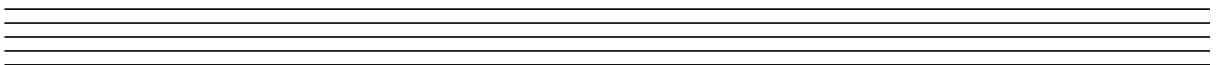
2. Draw five flats.



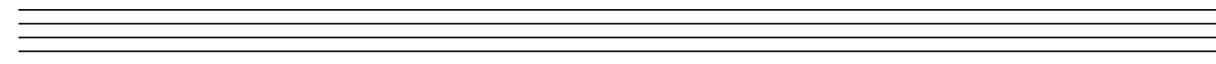
3. Draw five naturals.



4. Draw five double sharps.



5. Draw five double flats.



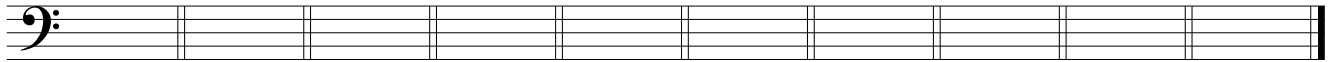
3. **“Drawing Notes with Accidentals” Directions:** Draw the notes and their accidentals in the indicated clefs, in any octave.

A. Treble Clef



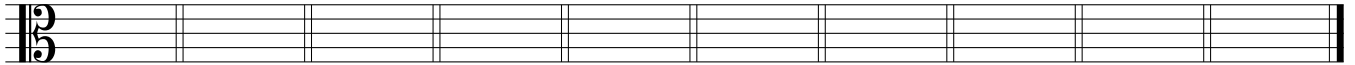
1. B $\flat$  2. G $\sharp$  3. A $\natural$  4. D $\sharp$  5. C $\sharp\sharp$  6. F $\flat\flat$  7. A $\flat$  8. E $\sharp$  9. B $\sharp\sharp$  10. G $\natural$

B. Bass Clef



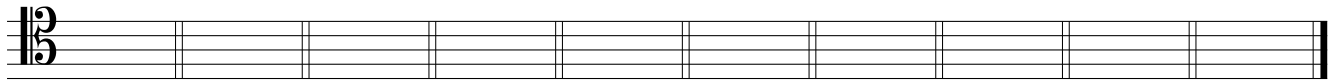
1. E $\flat$  2. A $\sharp$  3. D $\natural$  4. G $\sharp$  5. F $\sharp\sharp$  6. C $\flat\flat$  7. B $\flat$  8. A $\sharp$  9. E $\sharp\sharp$  10. D $\natural$

C. Alto Clef



1. C $\flat$  2. F $\sharp$  3. B $\natural$  4. E $\sharp$  5. A $\sharp\sharp$  6. D $\flat\flat$  7. G $\flat$  8. C $\sharp$  9. F $\sharp\sharp$  10. B $\natural$

D. Tenor Clef



1. D $\flat$  2. C $\sharp$  3. F $\natural$  4. B $\sharp$  5. E $\sharp\sharp$  6. A $\flat\flat$  7. D $\flat$  8. G $\sharp$  9. C $\sharp\sharp$  10. F $\natural$