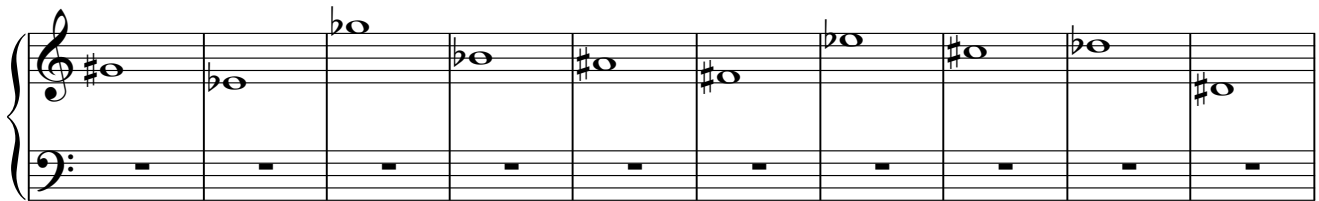


Name: \_\_\_\_\_

## Half- and Whole-steps in Staff Notation

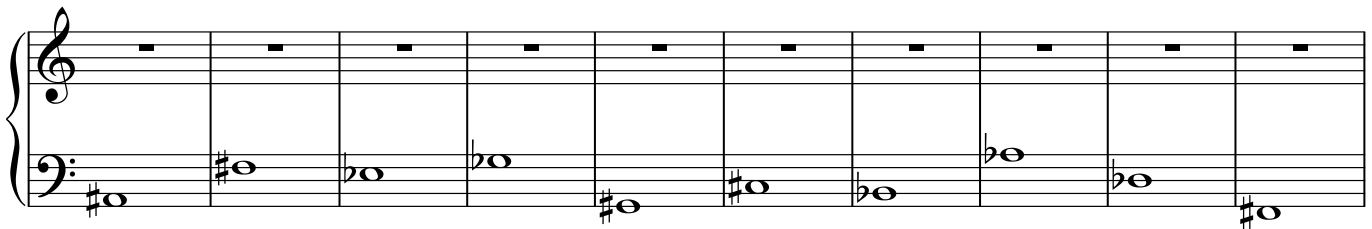
1. “Drawing Half- and Whole-steps” Directions: Draw notes a half- or whole-step above or below the indicated notes.

A. Draw an open note head a half-step up from each of the given notes.



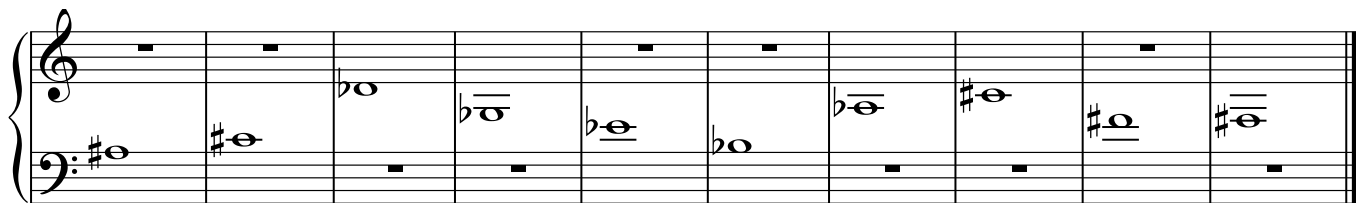
A musical staff with a treble clef and a key signature of one sharp (F#). The staff contains ten measures. The notes in the treble clef are: G4 (first measure), A4 (second), B4 (third), C5 (fourth), D5 (fifth), E5 (sixth), F#5 (seventh), G5 (eighth), A5 (ninth), and B5 (tenth). The bass clef contains rests in all ten measures.

B. Draw an open note head a half-step down from each of the given notes.



A musical staff with a bass clef and a key signature of one sharp (F#). The staff contains ten measures. The notes in the bass clef are: G3 (first), F#3 (second), E3 (third), D3 (fourth), C3 (fifth), B2 (sixth), A2 (seventh), G2 (eighth), F#2 (ninth), and E2 (tenth). The treble clef contains rests in all ten measures.

C. Draw an open note head a whole-step up from each of the given notes.



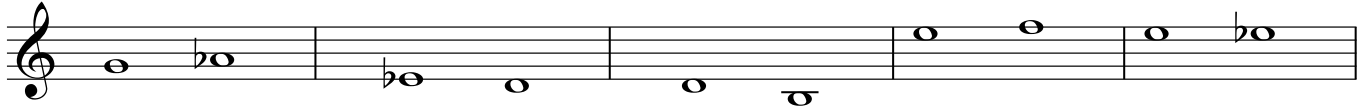
A musical staff with a bass clef and a key signature of one sharp (F#). The staff contains ten measures. The notes in the bass clef are: G2 (first), A2 (second), B2 (third), C3 (fourth), D3 (fifth), E3 (sixth), F#3 (seventh), G3 (eighth), A3 (ninth), and B3 (tenth). The treble clef contains rests in all ten measures.

D. Draw an open note head a whole-step down from each of the given notes.

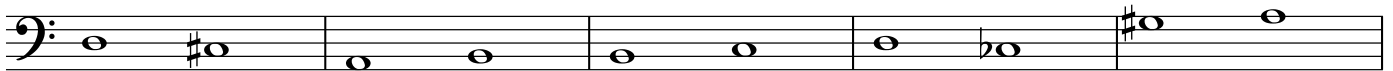


A musical staff with a treble clef and a key signature of one sharp (F#). The staff contains ten measures. The notes in the treble clef are: G4 (first), F#4 (second), E4 (third), D4 (fourth), C4 (fifth), B3 (sixth), A3 (seventh), G3 (eighth), F#3 (ninth), and E3 (tenth). The bass clef contains rests in all ten measures.

2. **“Identifying Half- and Whole-steps” Directions:** Identify each of the following pairs of notes as either a Half-step (H), Whole-step (W), or Neither (N).



1. \_\_\_\_\_ 2. \_\_\_\_\_ 3. \_\_\_\_\_ 4. \_\_\_\_\_ 5. \_\_\_\_\_



1. \_\_\_\_\_ 2. \_\_\_\_\_ 3. \_\_\_\_\_ 4. \_\_\_\_\_ 5. \_\_\_\_\_



1. \_\_\_\_\_ 2. \_\_\_\_\_ 3. \_\_\_\_\_ 4. \_\_\_\_\_ 5. \_\_\_\_\_