

Note Identification & Writing with ASPN Labels

Name: _____

PART 1: Note Identification

Directions: Identify each pitch by letter name and ASPN number (e.g. A4, B5, etc.).

① ② ③ ④ ⑤ ⑥ ⑦ ⑧ ⑨ ⑩

Detailed description: A single musical staff in treble clef. It contains ten whole notes, each in a separate measure. Above each note is a circled number from 1 to 10. The notes are: 1. G4 (first space), 2. F4 (first space), 3. E4 (first space), 4. D4 (first space), 5. C4 (below the staff), 6. B3 (below the staff), 7. A3 (below the staff), 8. G3 (below the staff), 9. F3 (below the staff), 10. E3 (below the staff). Below the staff are ten horizontal lines for writing the answer.

⑪ ⑫ ⑬ ⑭ ⑮ ⑯ ⑰ ⑱ ⑲ ⑳

Detailed description: A single musical staff in bass clef. It contains ten whole notes, each in a separate measure. Above each note is a circled number from 11 to 20. The notes are: 11. D3 (below the staff), 12. C3 (below the staff), 13. B2 (below the staff), 14. A2 (below the staff), 15. G2 (below the staff), 16. F2 (below the staff), 17. E2 (below the staff), 18. D2 (below the staff), 19. C2 (below the staff), 20. B1 (below the staff). Below the staff are ten horizontal lines for writing the answer.

㉑ ㉒ ㉓ ㉔ ㉕ ㉖ ㉗ ㉘ ㉙ ㉚

Detailed description: A single musical staff in bass clef. It contains ten whole notes, each in a separate measure. Above each note is a circled number from 21 to 30. The notes are: 21. A2 (below the staff), 22. G2 (below the staff), 23. F2 (below the staff), 24. E2 (below the staff), 25. D2 (below the staff), 26. C2 (below the staff), 27. B1 (below the staff), 28. A1 (below the staff), 29. G1 (below the staff), 30. F1 (below the staff). Below the staff are ten horizontal lines for writing the answer.

㉓ ㉔ ㉕ ㉖ ㉗ ㉘ ㉙ ㉚ ㉛ ㉜

Detailed description: A single musical staff in bass clef. It contains ten whole notes, each in a separate measure. Above each note is a circled number from 31 to 40. The notes are: 31. E2 (below the staff), 32. D2 (below the staff), 33. C2 (below the staff), 34. B1 (below the staff), 35. A1 (below the staff), 36. G1 (below the staff), 37. F1 (below the staff), 38. E1 (below the staff), 39. D1 (below the staff), 40. C1 (below the staff). Below the staff are ten horizontal lines for writing the answer.

Note Identification & Writing with ASPN Labels

41 42 43 44 45 46 47 48 49 50

51 52 53 54 55 56 57 58 59 60

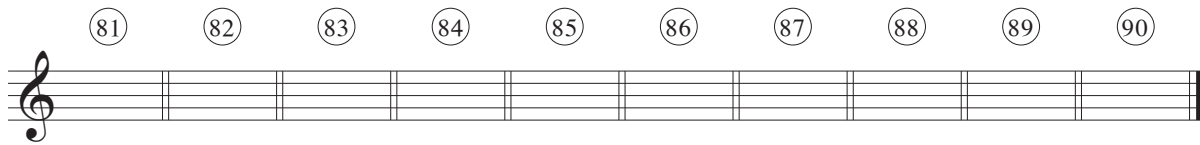
61 62 63 64 65 66 67 68 69 70

71 72 73 74 75 76 77 78 79 80

Note Identification & Writing with ASPN Labels

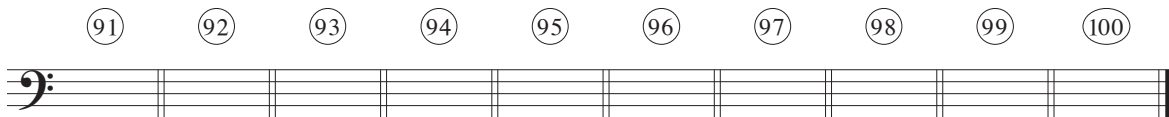
PART 2: Note Writing

Directions: Draw the notes, paying attention to the octave designations.



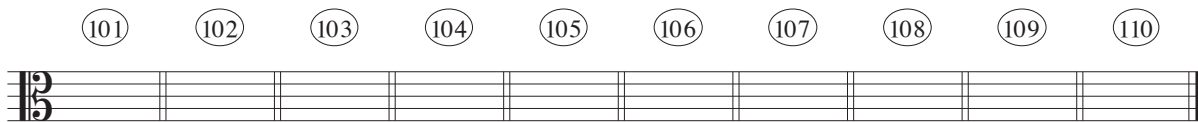
81 82 83 84 85 86 87 88 89 90

C5 E4 F5 A4 D5 B3 G4 C4 F4 A5



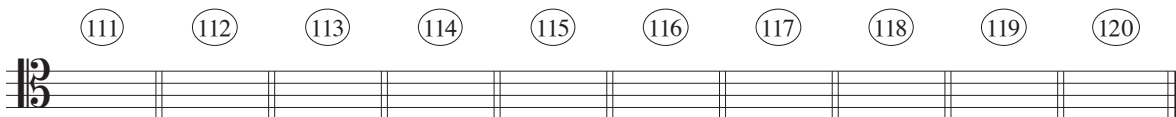
91 92 93 94 95 96 97 98 99 100

F3 E2 D3 B2 C4. A3 F2 G3 E3 D2



101 102 103 104 105 106 107 108 109 110

B3 D4 E3 G4. D3 A4 G3 F4 C4 A3



111 112 113 114 115 116 117 118 119 120

D4 C3. A3 B3 D3 F4 B4 C4 G3 E3