

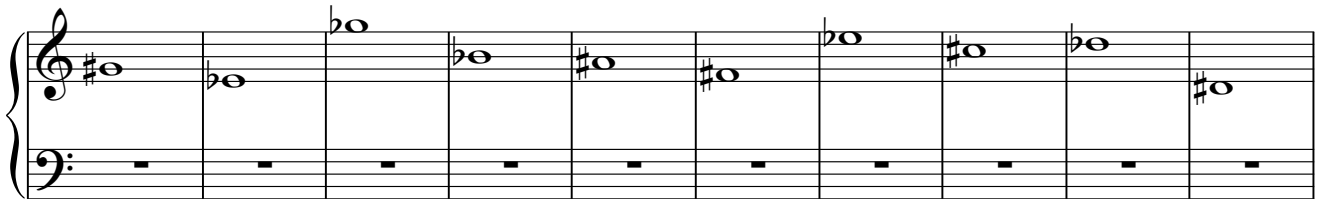
Half and Whole Steps in Staff Notation

Name: _____

PART 1: Drawing Half and Whole Steps

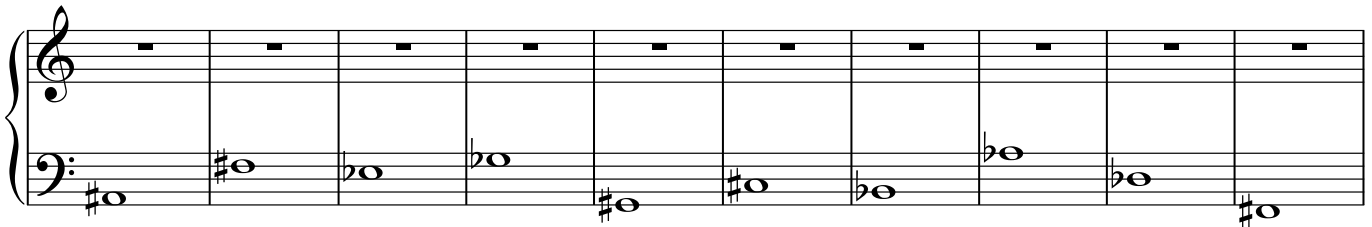
Directions: Draw notes a half or whole step above or below the indicated notes.

A. Draw an open note head a half step up from each of the given notes.




A musical staff with a treble clef and a key signature of one sharp (F#). The staff contains ten measures. The first measure has a whole note on G4. The second measure has a whole note on A4. The third measure has a whole note on B4. The fourth measure has a whole note on C5. The fifth measure has a whole note on D5. The sixth measure has a whole note on E5. The seventh measure has a whole note on F5. The eighth measure has a whole note on G5. The ninth measure has a whole note on A5. The tenth measure has a whole note on B5. The bass clef staff is empty.

B. Draw an open note head a half step down from each of the given notes.



A musical staff with a bass clef and a key signature of one sharp (F#). The staff contains ten measures. The first measure has a whole note on G3. The second measure has a whole note on F3. The third measure has a whole note on E3. The fourth measure has a whole note on D3. The fifth measure has a whole note on C3. The sixth measure has a whole note on B2. The seventh measure has a whole note on A2. The eighth measure has a whole note on G2. The ninth measure has a whole note on F2. The tenth measure has a whole note on E2. The treble clef staff is empty.

C. Draw an open note head a whole step up from each of the given notes.



A musical staff with a bass clef and a key signature of one sharp (F#). The staff contains ten measures. The first measure has a whole note on G3. The second measure has a whole note on A3. The third measure has a whole note on B3. The fourth measure has a whole note on C4. The fifth measure has a whole note on D4. The sixth measure has a whole note on E4. The seventh measure has a whole note on F4. The eighth measure has a whole note on G4. The ninth measure has a whole note on A4. The tenth measure has a whole note on B4. The treble clef staff is empty.

D. Draw an open note head a whole step down from each of the given notes.



A musical staff with a treble clef and a key signature of one sharp (F#). The staff contains ten measures. The first measure has a whole note on G4. The second measure has a whole note on F4. The third measure has a whole note on E4. The fourth measure has a whole note on D4. The fifth measure has a whole note on C4. The sixth measure has a whole note on B3. The seventh measure has a whole note on A3. The eighth measure has a whole note on G3. The ninth measure has a whole note on F3. The tenth measure has a whole note on E3. The bass clef staff is empty.

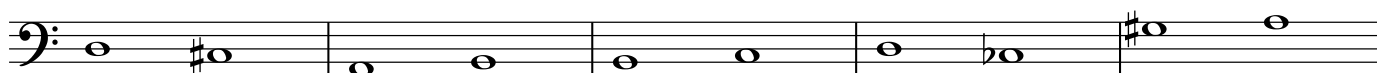
Half and Whole Steps in Staff Notation

PART 2: Identifying Half and Whole Steps

Directions: Identify each of the following pairs of notes as either a Half Step (H), Whole Step (W), or Neither (N).



1. _____ 2. _____ 3. _____ 4. _____ 5. _____



1. _____ 2. _____ 3. _____ 4. _____ 5. _____



1. _____ 2. _____ 3. _____ 4. _____ 5. _____