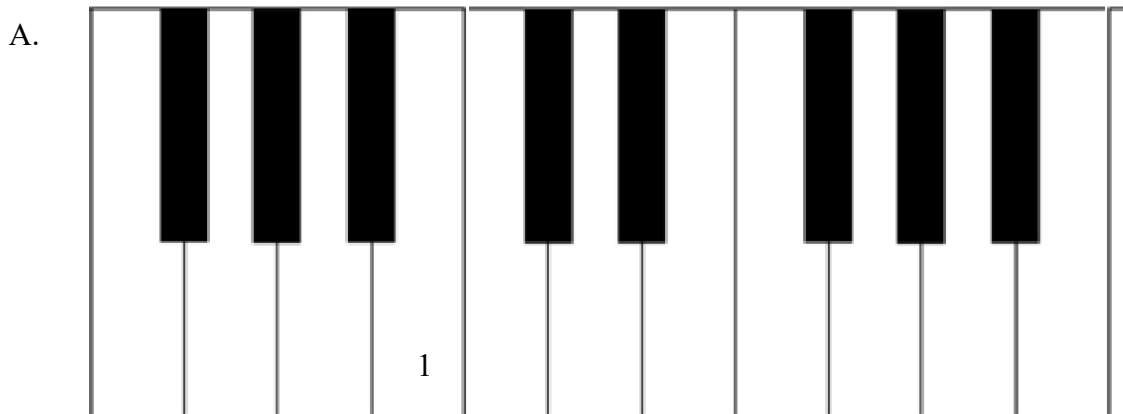


# The Piano Keyboard and the Grand Staff with Ledger Lines


Name: \_\_\_\_\_

## PART 1: The Grand Staff and the Piano Keyboard with Ledger Lines

**Directions:** Write the numbers of the notes found on the grand staves onto the white keys of the piano keyboard. Some keys may have more than one number. Number one has been done in each example.

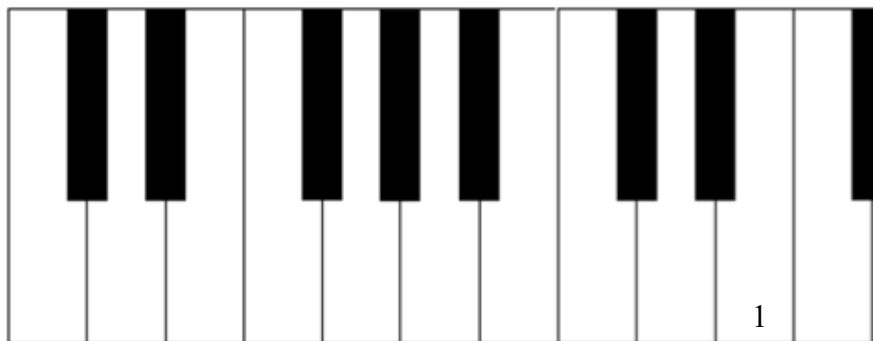


1.      2.      3.      4.      5.      6.      7.      8.      9.      10.



## The Piano Keyboard and the Grand Staff with Ledger Lines

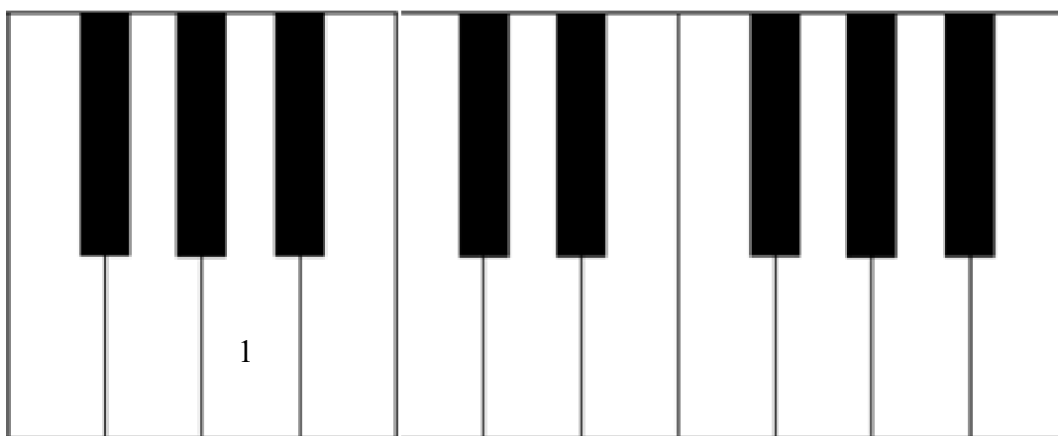
B.



1. 2. 3. 4. 5. 6. 7. 8. 9. 10.

Musical notation for exercise B. The grand staff shows notes for keys 2-10. Treble clef notes: 2 (C4), 3 (D4), 4 (E4), 5 (F4), 6 (G4), 7 (A4), 8 (B4), 9 (C5), 10 (D5). Bass clef notes: 2 (C3), 3 (D3), 4 (E3), 5 (F3), 6 (G3), 7 (A3), 8 (B3), 9 (C4), 10 (D4). Ledger lines are used for notes below the bass staff.

C.

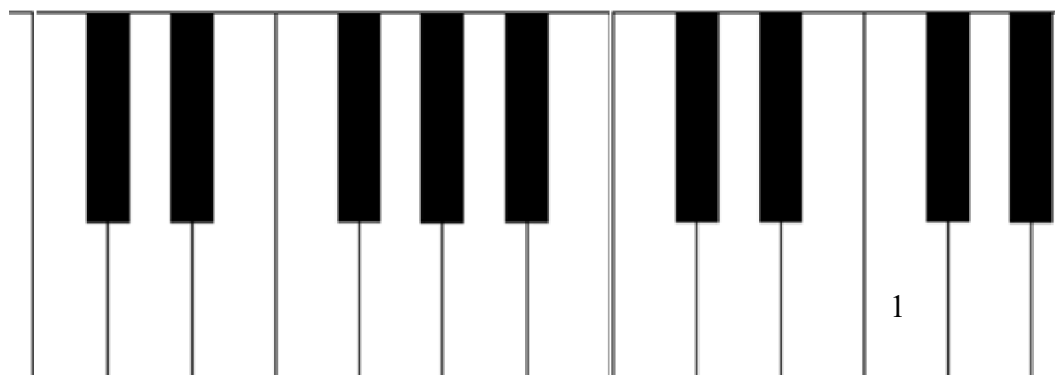


1. 2. 3. 4. 5. 6. 7. 8. 9. 10.

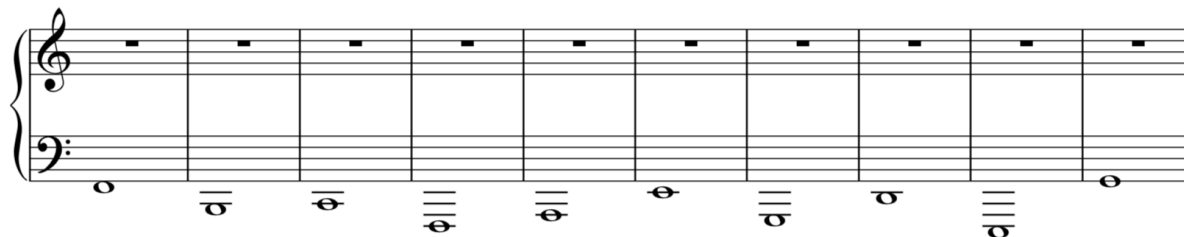
Musical notation for exercise C. The grand staff shows notes for keys 2-10. Treble clef notes: 2 (C4), 3 (D4), 4 (E4), 5 (F4), 6 (G4), 7 (A4), 8 (B4), 9 (C5), 10 (D5). Bass clef notes: 2 (C3), 3 (D3), 4 (E3), 5 (F3), 6 (G3), 7 (A3), 8 (B3), 9 (C4), 10 (D4). Ledger lines are used for notes below the bass staff.

## The Piano Keyboard and the Grand Staff with Ledger Lines

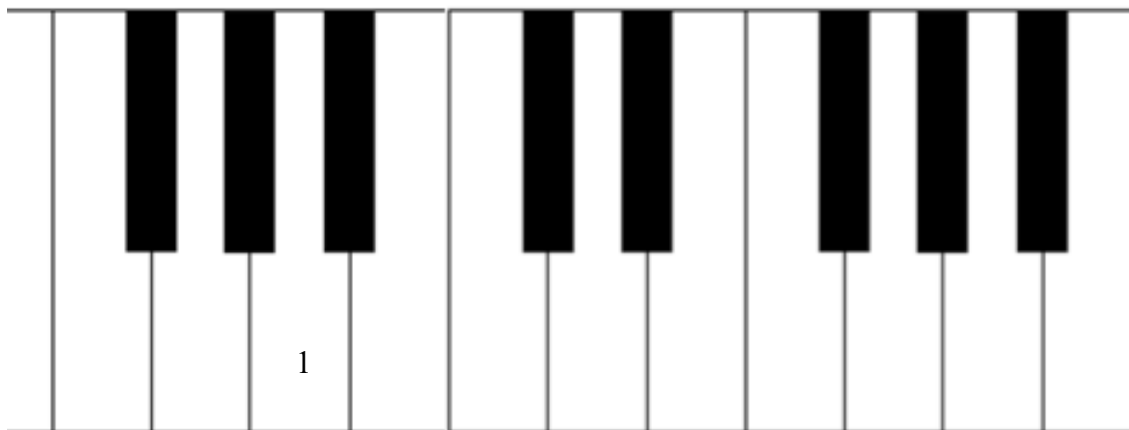
D.



1. 2. 3. 4. 5. 6. 7. 8. 9. 10.



E.



1. 2. 3. 4. 5. 6. 7. 8. 9. 10.

